

# Outcomes of this introductory session for Limerick PPN members

## **You will know more about:**

1. Background to PPN's
2. Limerick City and County Council structures
3. Limerick PPN structures

**Autumn 2020**

# 1. Background to PPN's –Local government reform in Ireland

## Section 46 of the Local Government Reform Act, 2014

- 1. “A local authority may take such steps as it considers appropriate to consult with and promote effective participation by the local community in local government.”*
2. Legislative basis for the establishment of the Public Participation Networks (PPNs) to facilitate greater collaboration between Local Authorities and local volunteer-led organisations.
3. A formal mechanism that allows the Local Authority to connect with Community & Voluntary, Social Inclusion and Environmental sectors.



## 2. Limerick City and County Council structures

# Limeric

## k

**Newcastle West  
District**

**Population:  
27,336**

**Councillors: 6**

**Adare/Rathkeale  
District**

**Population:  
27,650**

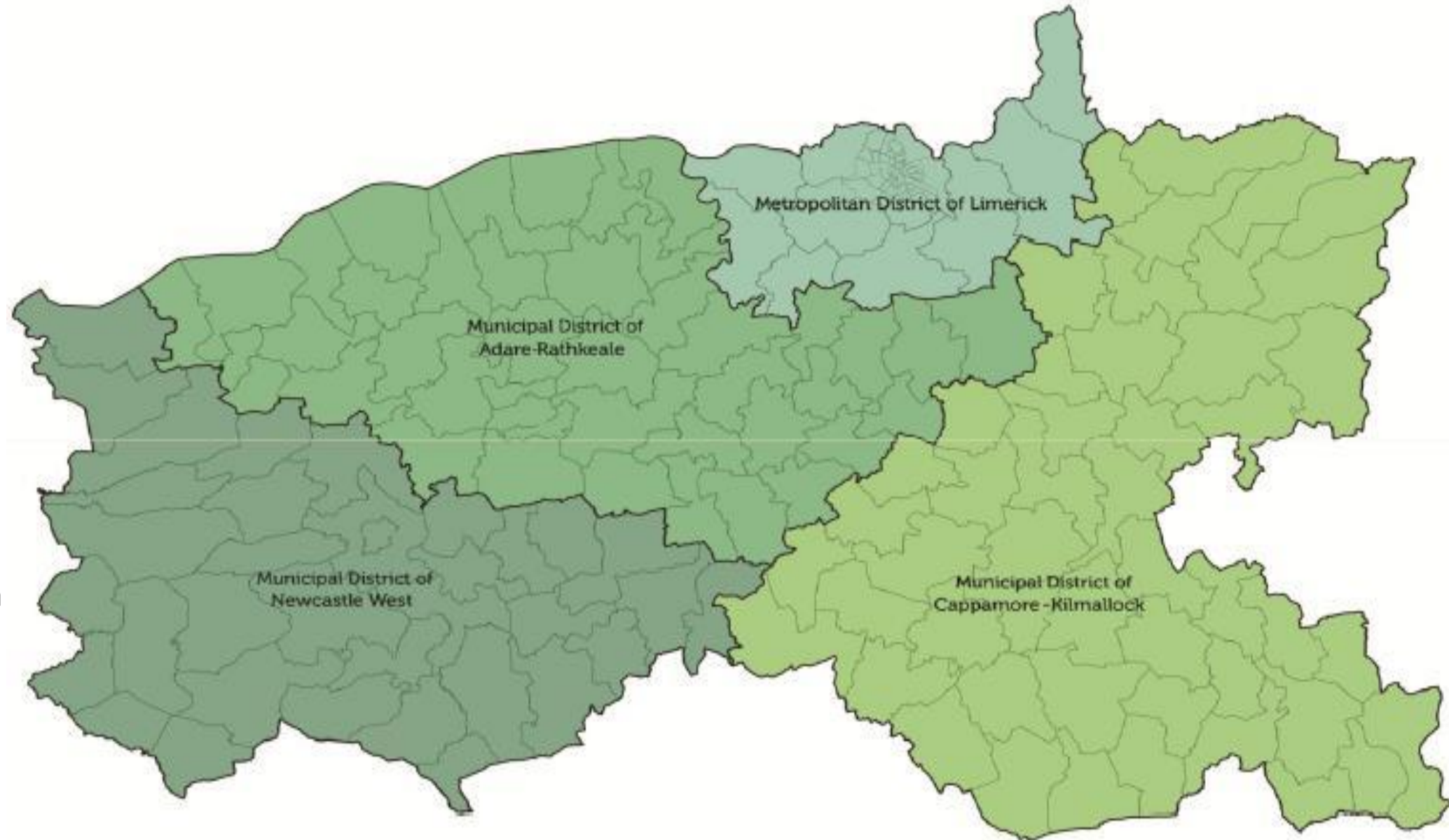
**Councillors: 6**

**Cappamore/Kilma  
llock District**

**Population:  
34,536**

**Councillors: 7**

**Metropolitan  
District**



**Population: 105,326**

**Councillors: 21**

**LIMERICK (2019)**

**Population: 195,175**

**Municipal Districts: 4**

**Local Electoral Areas: 6**

**Councillors: 40**

**Live Register of Electors 27,827**

<https://www.limerick.ie/council/your-council>



What We Do



Mayor & Councillors



Structure and Vision



MAY 24, 2019

# LIMERICK PEOPLE VOTE FOR A DIRECTLY ELECTED MAYOR

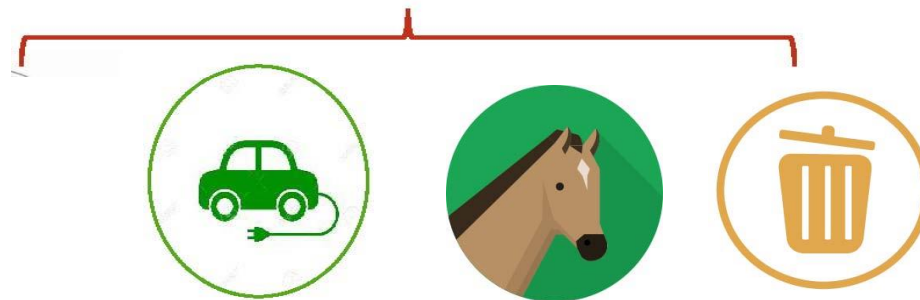
Whilst the cities and counties of Cork and Waterford rejected the idea, Limerick will be the first county in Ireland to have a directly elected Mayor with executive functions.

## Reserved Functions of Local Government

The elected council, as the policy-making arm of the local authority, act by these. They are defined by law. They are comprised mainly of decisions on policy and finance matters. For example, the adoption of the budget and the creation of the development plan.



Speed Limit  
Control of  
Horses  
Electric  
Vehicle  
Parking  
Waste  
Presentatio  
n  
Bye-Laws  
Adopted/  
Review



## Executive Functions of Local Government

The Chief Executive and/or staff to whom functions are delegated involve the day-to-day running of the local authority within the policy confines as determined by the Council. For example, the appointment of staff and the grant/refusal of planning permissions.

Approx. 1,480 staff

8 Directorates

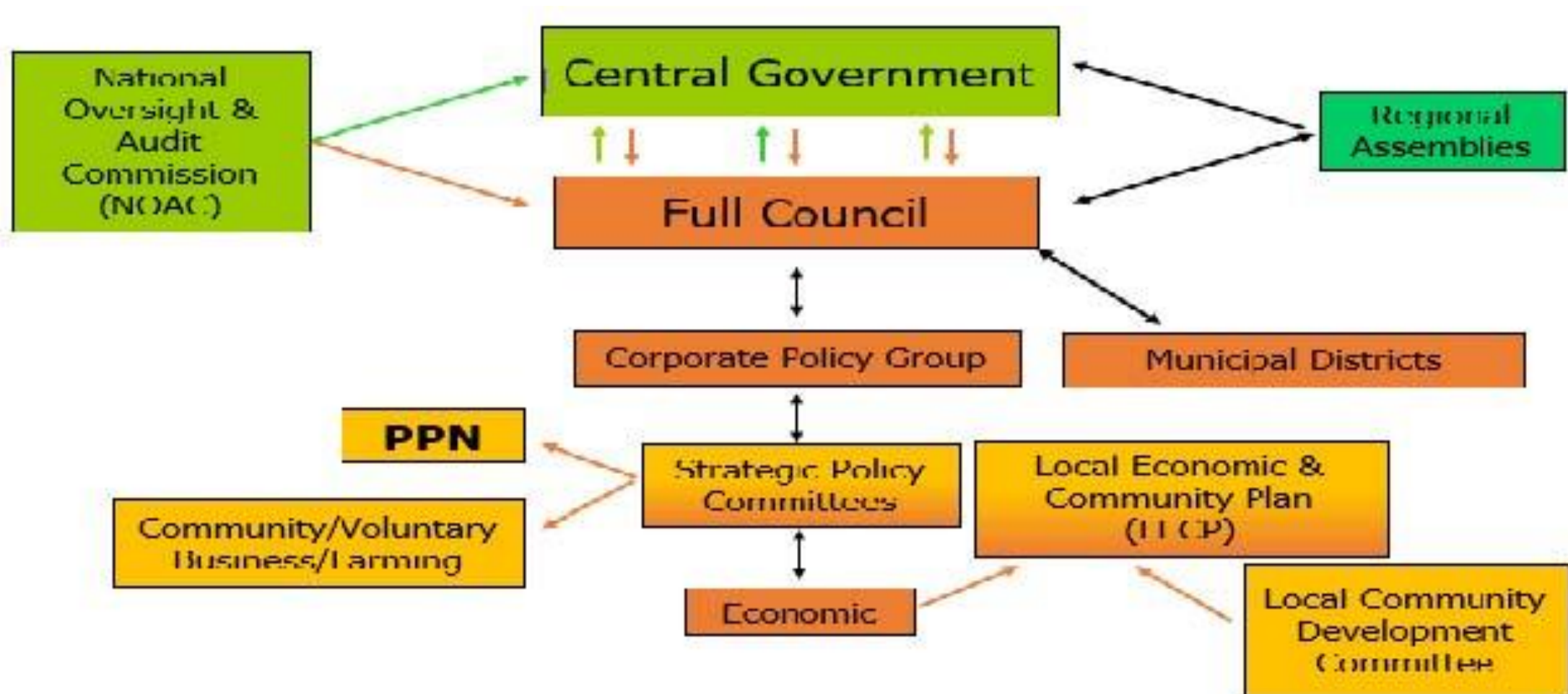


# How Councils Formally Make Decisions

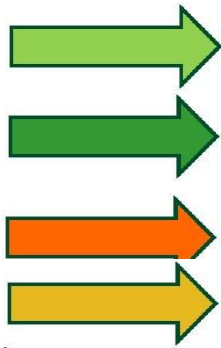
[https://www.tasc.ie/opengovtoolkit/engaging-a-s-citizens/local-government/\[sCCLINK\]](https://www.tasc.ie/opengovtoolkit/engaging-a-s-citizens/local-government/[sCCLINK])



Political  
(Reserved)  
Structure  
(national-  
regional-local)



Central Government  
Regional Structures  
Local Government  
Community





## Local Government

Local Area  
Plan or SDZ

City & County  
Development Plans



Local Economic and  
Community Plans



## Regional Assembly

Regional Spatial &  
Economic Strategy



Other regional plans and  
programmes i.e.  
regional enterprise strategies



## Government Department

National Planning  
Framework



Action Plan for jobs



Strategy

Chief Executive  
Department

Economic Development  
Directorate

Trade & Investment - Strategic & Forward Planning -  
Use of Budgetary Control - Infrastructure Finance & -  
Marketing & Communications - Economic Growth Policy - Urban Innovation

Physical Development  
Directorate

Travel & Transport/Land Strategy - Environment Strategy - Water Services  
- Mid West Water Design Centre

Community Development  
Directorate

Urban & Rural Community Development - Tourism, Culture & Arts -  
Libraries, Gallery & Museums - Localist Sports Partnership -  
Property & Community Partners

Housing Development  
Directorate

Urban Regeneration - Strategic Housing Development

Operations

Service Operations  
Directorate

Housing Support Services - Planning & Environmental Services -  
Options & Maintenance Services - Veterinary Services

Capital Investment  
Directorate

Design & Delivery

Shared  
Centres

National & Regional  
Shared Services  
Directorate

Housing Assistance Payments (HAP) Shared Services Centre -  
Solutions Manager (Water Management) Centre - Procurement & Supply -  
Digital Services

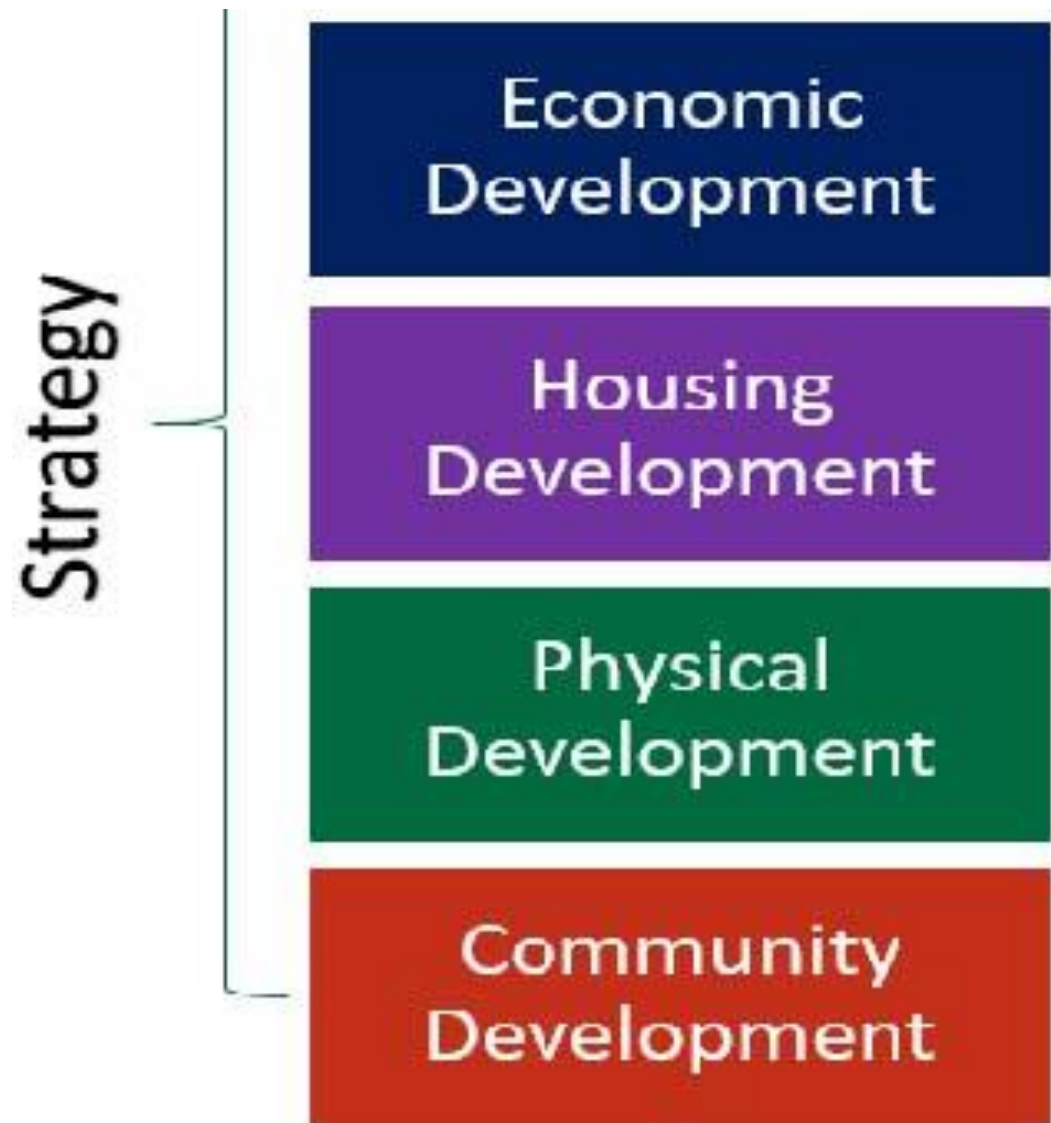
Support

Support Services  
Directorate

Finance Services - ICT Services - Human Resources - Compliance Services  
Operational & Customer Services Department - Business Improvement

# Organisational(Executive) Structure of Limerick City and County Council

## Economic Development, Enterprise and Planning SPC



Climate Action, Biodiversity and Environment SPC

Travel and Transportation SPC

Home and Social Development SPC

Community, Leisure and Culture SPC

**Five Strategic Policy Committees:**

# Strategic Policy Committees (SPC's)

## **SPC Travel & Transportation**

The Travel & Transportation Strategic Policy Committee is responsible for all areas of policy and strategy concerning Roads/Transport Infrastructure and Travel modes.

## **SPC Climate Action, Biodiversity & Environment**

The Climate Action, Biodiversity and Environment SPC is responsible for and assists the council in the formulation, development and review of policy and strategy in the area of Climate Action and Biodiversity

## **SPC Economic Development, Enterprise & Planning**

The Economic Development, Enterprise & Planning SPC is responsible for all areas of policy concerning the council's economic development, enterprise and planning functions.

## **SPC Community, Leisure & Culture**

The Community, Culture and Leisure SPC engages with elected members and community stakeholders in developing and implementing strategies for community development and infrastructure, tourism, library services, sports and leisure, arts and age-friendly initiatives.

## **SPC Home & Social Development**

The Home and Social Strategic Policy Committee is responsible for the formulation, monitoring and

reviewing of policies related to housing and to advise the Council accordingly.

## Joint Policing Committees(JPC's)

Provides a dedicated forum to support consultation, cooperation and synergy on policing and crime issues between the Garda Síochána, local authority officials, elected representatives and the community and voluntary sectors.

### Joint Policing Committee Meetings

### Joint Policing Committee Guidelines

The current Joint Policing Committee (JPC) guidelines were amended August 2011.

### Joint Policing Committee Members

The role of the Joint Policing Committee is to develop greater consultation, co-operation and synergy on policing and crime issues between An Garda Síochána, Limerick City and County Council and elected local representatives and to facilitate the participation of the community and voluntary sectors.



1. to develop, implement a six-year Local Economic Plan for each local authority area.

and monitor and Community

2. to oversee the distribution of funds through the LEADER and SICAP Programmes. These funds are for projects aimed at rural development, education, training, social development and enterprise work with marginalised groups and communities.

**MEMBERSHIP:**

1. Councillor Michael Collins (Chairperson)
2. Councillor Stephen Keary (Vice Chairperson)
3. Councillor Catherine Slattery
4. Councillor Brigid Teefy
5. Gordon Daly Limerick, City and County Council
6. Pádraig Casey Ballyhoura, Development Company

7. Anne Kavanagh, PAUL Partnership
8. Shay Riordan, West Limerick Resources
9. Edel Geraghty, Public Participation Network
10. Susan O'Neill, Public Participation Network
11. James Prior, Public Participation Network
12. Tony Lynch, Public Participation Network
13. George O'Callaghan, Limerick and Clare Education and Training Board
14. Jim Lynch, Dept. of Employment Affairs and Social Protection
15. Tony Quilty, Health Service Executive
16. Aidan Gleeson, Irish Farmers' Association
17. Fiona O'Grady, Limerick Youth Service
18. Dee Ryan, Limerick Chamber of Commerce
19. Vacant PPN Seat

# LIMERICK

# PPN

---

Public  
Participation  
Network

---

## 3. Limerick PPN structures

## Latest News



Elections Opened for



Limerick PPN Linkage

### Have Your Say!

Limerick Public Participation Network (PPN) is a network of community, voluntary, social inclusion and environmental organisations, working together for a better Limerick.

Limerick Public Participation Network enables the community to be represented in decision-making processes such as Limerick City and County Council committees and local public consultation processes.

### Membership

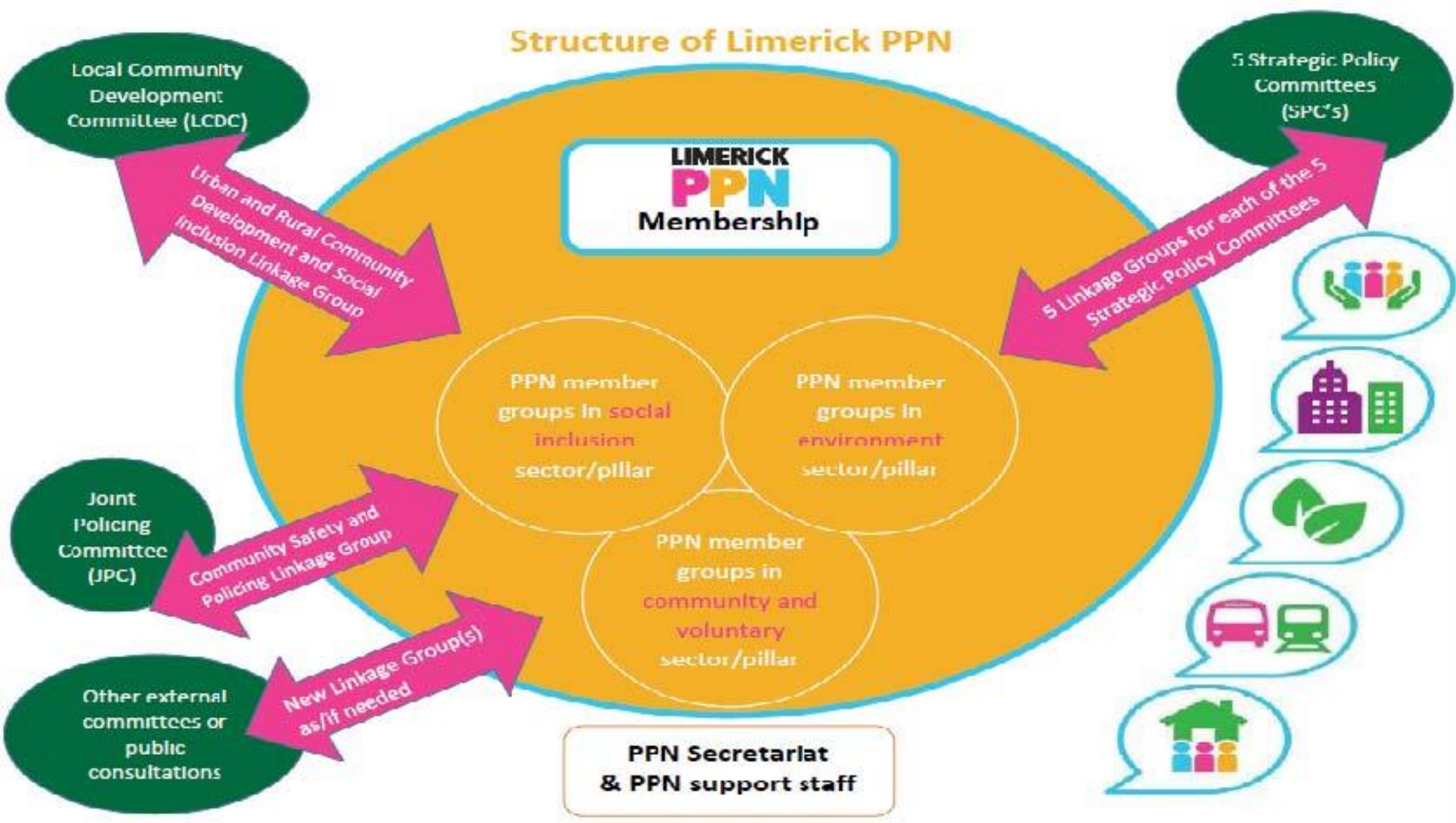
Membership of the  
PPN

### Registration

Register for Limerick  
PPN

[www.limerickppn.ie](http://www.limerickppn.ie)

# Structure of Limerick PPN





## What is a Linkage Group

A Linkage Group is a collection of PPN member groups/organisations who have an interest in the work of a given external committee.

## Role of Linkage Groups

1. Linkage Group members nominate, elect and support PPN representatives on external committees.
2. Linkage Group members discuss and debate the matters being discussed by the external committee, to inform the representative(s), and where relevant to prioritise and develop policy positions.

The Council  
wants your ideas



The PPN will connect  
your group with other  
likeminded groups  
(This is called a  
Linkage Group)



Select a representative  
from the Linkage Group



The Linkage Group  
representative now  
has a formal link with  
the Council



Your Linkage Group  
representative  
will keep you in  
the loop



The Linkage Group's  
ideas will inform  
Council decisions





# RECAP

1. Background to PPN's
2. Limerick City and County Council structures
3. Limerick PPN structures

**Autumn 2020**