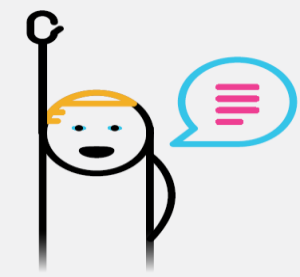


**1. To start**

Have you got an idea or opinion?



Are you part of a group that share this opinion?



Register your group with the PPN



To register with Limerick PPN, go to the [Limerick PPN website](#). The on-line registration form is on the website. Your group/organisation should meet certain membership conditions. Membership of Limerick PPN is made of eligible groups/organisations – not individuals.

The core function of the PPN is to be the independent and formal structure to elect and support community representatives on Council committees, in particular:

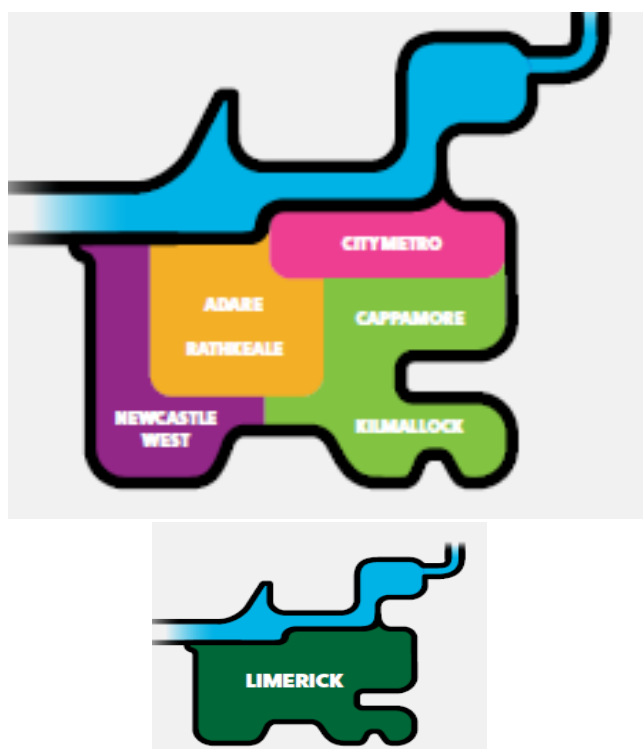
1. [Strategic Policy Committees](#)
2. [Joint Policing Committee](#)
3. Limerick [Local Community Development Committee](#) (LCDC)

**2. PPN structure**

Three pillars/sectors:



Four Municipal Districts:



So when your group registers, you will say what pillar/sector and which Municipal District it is in.

### 3. How the PPN works

a) **Plenary:**

The PPN membership is called the Plenary. The Plenary is the overall decision-making body of the PPN. All members have an equal say on the business of Limerick PPN. The Plenary usually meets twice a year.

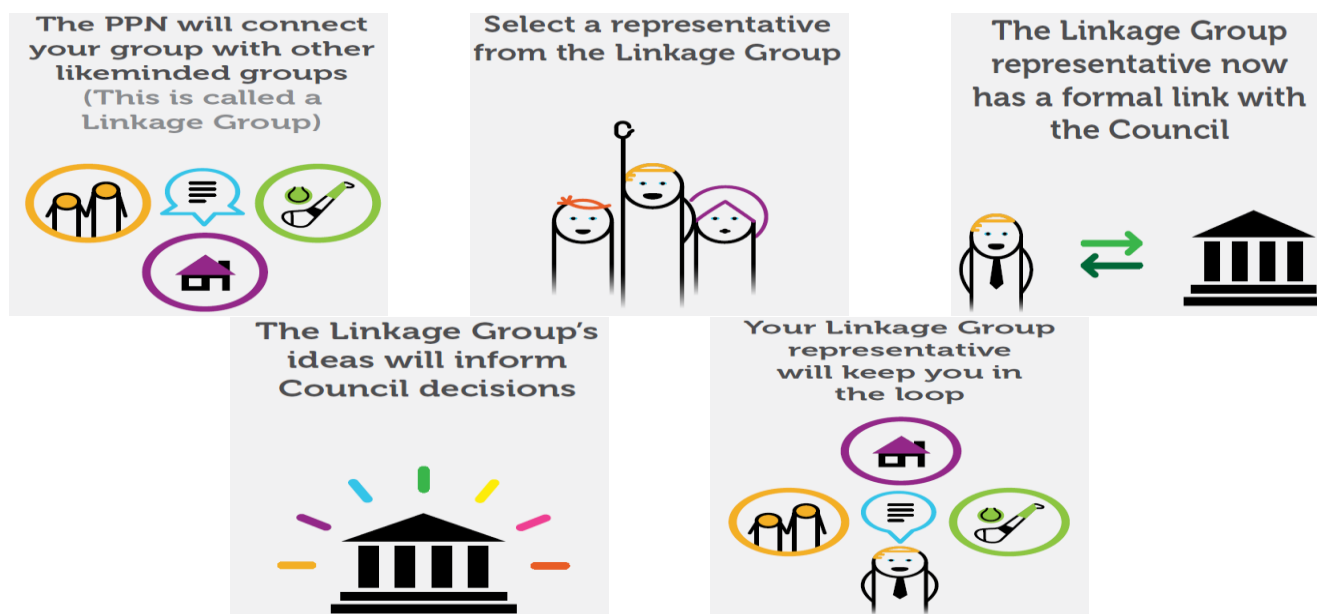
b) **Secretariat:**

A group of people elected by the Plenary manages the PPN on behalf of the PPN membership. This group is called the Secretariat. The Secretariat is helped by a Resource Worker and Support Worker. The membership of the Secretariat is made up of 10 people:

- 2 from each of the 3 pillars/sectors
- 1 from each of the Municipal Districts

c) **Linkage Groups:**

- Linkage Groups are networks of PPN member groups/organisations who are interested in themes such as housing, transport, tourism, planning, sport and recreation, culture, environment, social inclusion, rural development and so on.
- Currently, there is one Linkage Group created for each Council committee which has seats allocated to Limerick PPN representatives.
- Any PPN member group/organisation can have representation on any Linkage Group. A Linkage Group elects, supports and gives direction to their representative(s) on a Council committee.



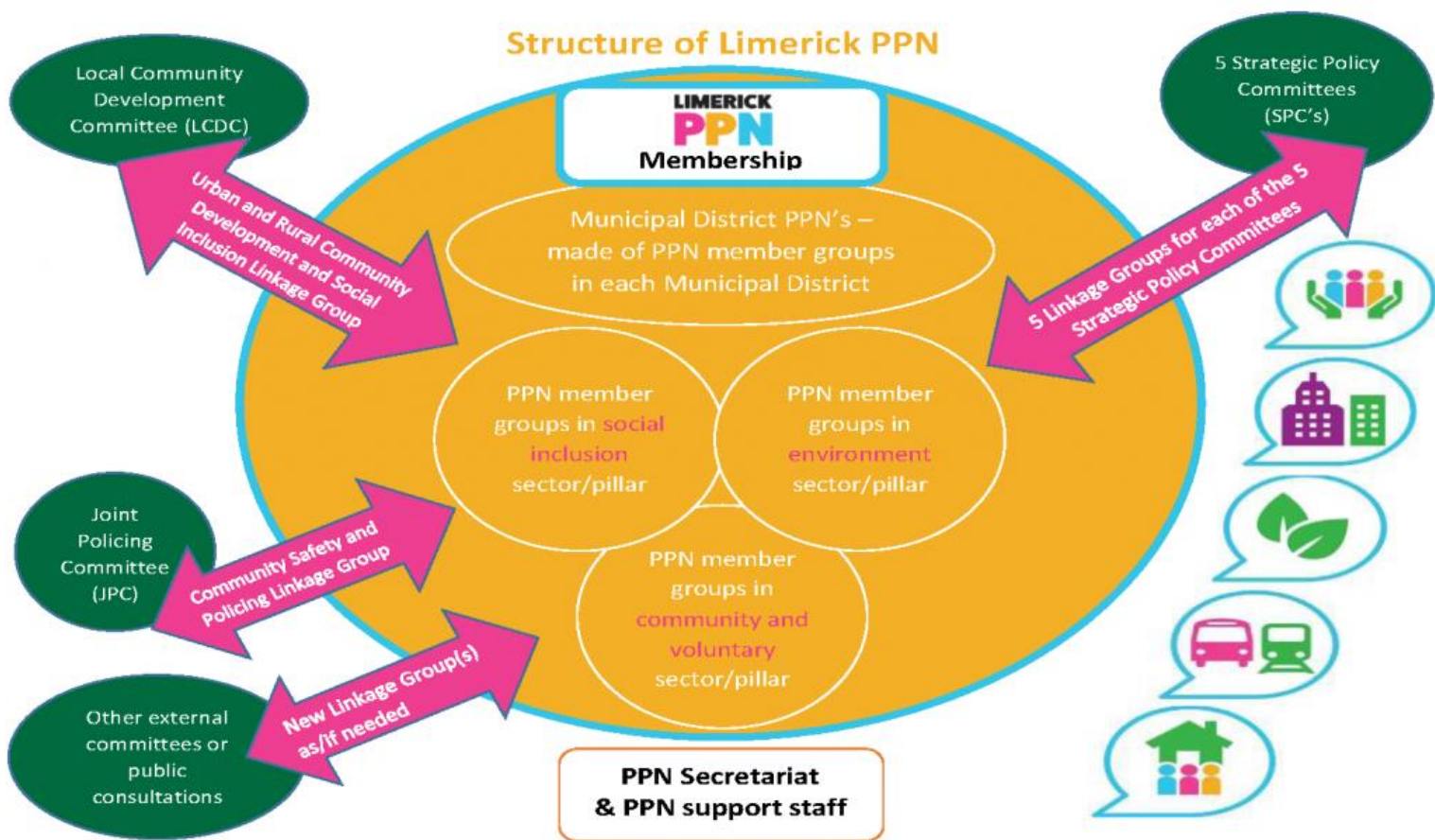
d) **PPN national handbook:**

The Limerick PPN is funded by both the Department of Rural and Community Development and Limerick City and County Council who expect the PPN to operate to the national [PPN national handbook](#).

e) **Other Useful resources:**

1. [Public Participation Networks Annual Reports](#) (useful information on PPN's in this)
2. [Sustainable, Inclusive and Empowered Communities A five-year strategy to support the community and voluntary sector in Ireland 2019-2024](#) (see in particular Objective 7 which is all about PPN's)
3. [Deliberative Democracy and the Development of the Public Participation Networks](#) (podcast by Social Justice Ireland)

4. Overview of Limerick PPN



Limerick Public Participation Network is a countywide network that facilitates people from the community, social inclusion and environmental pillars to participate in local decision-making and policy-development structures. It is part of the framework for public participation in local government and it has a statutory basis in the Local Government Act 2001 (as amended) (Section 127).

Limerick PPN aims to provide open, inclusive and transparent representative structures that will feed a broad range of ideas, experience, suggestions and proposals from PPN member groups from across Limerick City and County into policies and plans being developed by agencies and decision makers and is committed in its practices to implementing the [UN Sustainable Development Goals](#).

- Visit the [Limerick PPN website](#) for more information
- Follow us on [Twitter](#) and [Facebook](#)
- Email: [ppn@limerick.ie](mailto:ppn@limerick.ie)