



About PPN Limerick

PPN Limerick is a network of community, voluntary, social inclusion and environmental groups/organisations, working together for a better Limerick through public participation in local democratic structures.

Visit [our website](#) for more information



In This Newsletter

- **RED WEATHER ALERT**
- **SPC UPDATE**
- **Closing date for applications for the Local Enhancement Programme**
- **Community Monuments Fund 2025**
- **2025 Limerick on Foot campaign**
- **And more.....**

!!RED Weather Alert for Limerick!!



See below for full report including advice and direction regarding safety and preparedness.

<https://www.limerick.ie/council/newsroom/news/s-torm-eowyn-update-limerick-city-and-county-council-preparing-for-historic>

For up to date information visit the [Met Éireann](#) website.

For local updates visit [Limerick.ie/eowyn](https://www.limerick.ie/eowyn) or follow Limerick City and County Council on [X](#) and [Instagram](#).

Sign up to [MapAlerter](#) for information for your locality.

SPC UPDATE

Newly appointed Representatives should hear from their SPC Administrators in the coming weeks. Nominees from the other Sectoral interests are expected to be appointed at the next Full Council Meeting (27th January). We will share updates as we receive them.

We will run another round of elections for vacant seats in the coming months.

Click [HERE](#) to view our filled and Vacant Seats.

Grant Opportunities Local Enhancement Programme



Comhairle Cathrach
& Contae **Luimnigh**

Limerick City
& County Council

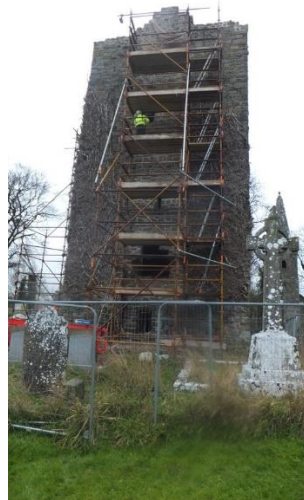
The closing date for applications for the Local Enhancement Programme 2025 is 12 noon on Friday 31st January 2025.

Details regarding the Local Enhancement Programme are available from: www.limerick.ie/local-enhancement-programme

Application forms must be completed online via the following link: <https://mypoint.limerick.ie/en/content/local-enhancement-programme-2025>

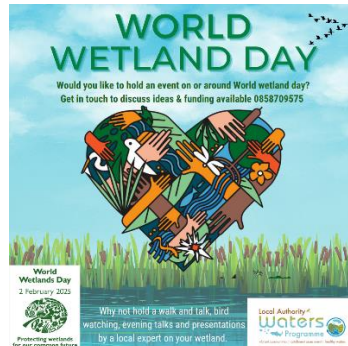
Please note the closing date for completed applications is 12 noon on 31st January 2025.

Community Monuments Fund 2025



REMINDER: applications for CMF25 close 31st January 2025 - 100% funding for works to Archaeological Monuments (SMR/RMP) in Limerick. More: <https://limerick.ie/council/services/planning-and-placemaking/heritage-conservation-and-biodiversity/community...>

World Wetland Day



"Would you like to hold a world wetlands day event? Contact your Community water officer to discuss event ideas and funding available"

Limerick Growing Communities

Please find attached a flyer for our up coming Limerick Growing Communities Webinar with Michael Kelly from GIY, which takes place on Tuesday January 28th at 8.30pm.

Limerick Growing Communities WEBINAR SERIES Autumn/Winter 2024/2025			
Thursday, 17th October @ 8.30pm	Putting the Garden to Bed	Jio Newton	
Tues. 19th Nov @ 8.30pm	Winter jobs & projects	Colin O Driscoll	
Thurs. 03rd Dec @ 8.30pm	Planning the Garden	Klaus Lusag	
CHANGE OF DATE: Tuesday, 28th January @ 8.30pm	Getting started in the Garden in 2025	Michael Kelly	

Limerick Growing Communities are delighted to announce these webinars as part of their Autumn/Winter programme of training and workshops to help gardeners and growers prepare for the coming winter and start planning for a new year of growing.
Contact Michael on mgleeson@pau-partnership.ie or 087 4078648 for more information

2025 Limerick on Foot campaign

Award-winning campaign championing walking, running and hiking along some of Limerick's most beloved routes, with a special 2025 spotlight on three rural Co. Limerick trails:

An Gleann Beag (Broadford), The Knight's Walk (Glin) and Slieveragh Loop Walk (Kilfinane). The 'More Healthy', multi-platform campaign features:

- **[Run it, Walk it, Love it Guide](#)**: Available in both print and digital formats.
- **[Limerick City Loop Walk](#) and [Three Bridges Loop Walk](#)**: Updated guides in print and digital format
- **[Kids Activity Sheet](#)**: Brand new for this year in print and digital formats

- **Comprehensive Limerick on Foot hub:** <https://www.limerick.ie/discover/eat-see-do/sports-recreation/activities/walking>

- **Social and digital content.** Follow us here: [Facebook](#) | [Instagram](#) | [X](#) | [TikTok](#)
- **E-newsletters:** dedicated newsletters will be sent out during the three-week campaign
- **Influencer engagement:** hugely popular influencers Trisha Lewis, Michelle McNulty and Tadhg O'Brien are ambassadors for this year's campaign
- Exciting **competition** on Limerick.ie social
- Public engagement at **Crescent Shopping Centre** this Saturday 25 January



Collaboration and Innovation Fund

2025 Collaboration and Innovation Fund is now open for applications and the closing date is 5pm Friday 7th February 2025.

<https://www.adultliteracyforlife.ie/fund/>

Heritage Organisation Support Fund

The Heritage Organisation Support Fund (HOSF) provides financial support to not-for-profit NGOs working in the heritage sector.

- Overview of criteria here **https://www.heritagecouncil.ie/funding/heritage_orgs-fund**
- The closing date is Monday, 27th of January 2025 at 5pm. Applications must be made via the Heritage Council's online grants management system: **<https://www.heritagecouncil.ie/funding/on-line-grants-system>**



Grant calls now open

Grants and bursaries for Limerick are now open for applications, with upcoming funding information sessions.

All details can be found [HERE](#)

And

[HERE](#)

Limerick Creative Communities Small Grant Scheme

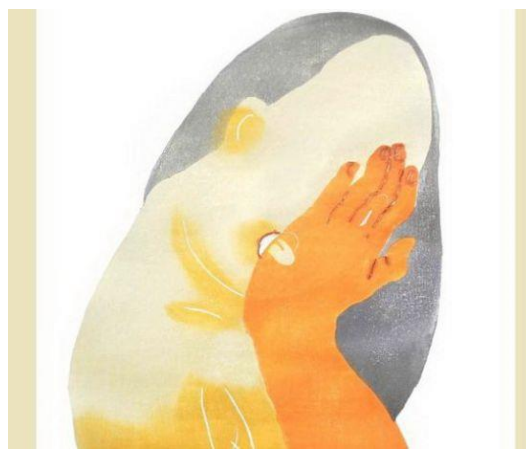
Limerick City and County Council Culture and Creativity team is pleased to announce an open call for Limerick based creatives, community organisations and groups to submit applications for the Limerick Creative Communities Small Grants Scheme 2025 (formerly Made in Limerick Grants Scheme), as part of Limerick's Creative Ireland Programme to deliver activities taking place in 2025.

Closing date: 12noon Wednesday 5th February 2025

Events



What's on in Limerick?



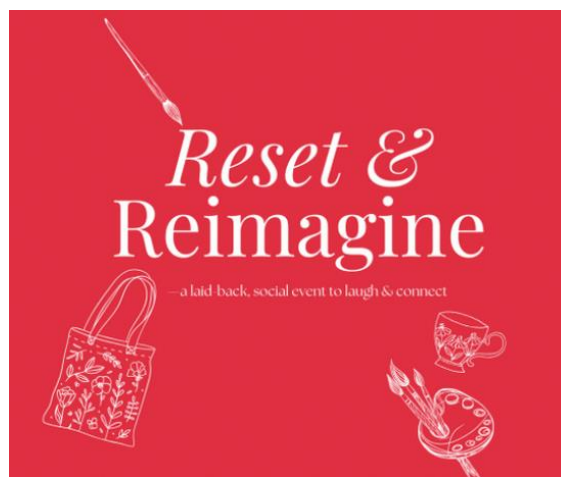
Tuesday 3rd December - Saturday 22nd February

[Kwaidan – Encounters with Lafcadio Hearn](#)

[Art/Exhibition](#)

Working together for a better Limerick

Contact Us
Phone: (061) 556347
Mobile: (087) 253 4059
Email: ppn@limerick.ie



Wednesday 22nd January

[Reset & Reimagine](#)

[Arts Workshops/Courses](#)



Wednesday 22nd & Thursday 23rd January @ 7.30pm

[Jason Byrne: No Show](#)

[Comedy](#)



Saturday 22nd February @ 8pm
Kerbdog + Special Guests: Aoife Destruction & The Nilz And 50
Foot Woman
Live Music,
Rock Music



Working together for a better Limerick

Contact Us
Phone: (061) 556347
Mobile: (087) 253 4059
Email: ppn@limerick.ie

Thursday 23rd - Sunday 26th January
Wickham Way
Food & Drink,
Markets & Fairs



Friday 24th - Sunday 26th January
Limerick Milk Market
Food & Drink,
Markets & Fairs



Friday 24th January @ 7.30pm

Working together for a better Limerick

Contact Us
Phone: (061) 556347
Mobile: (087) 253 4059
Email: ppn@limerick.ie

Ennis Road CFR Fundraising Quiz Night
Community,
Quiz,
Fundraising/Charity



COLÁISTE CHIARÁIN



Friday 24th & Saturday 25th January @ 7.30pm

Our House

Musical Theatre,

School



Working together for a better Limerick

Contact Us
Phone: (061) 556347
Mobile: (087) 253 4059
Email: ppn@limerick.ie



Friday 24th January @ 8pm

[Thin Az Lizzy](#)

[Live Music](#)



Friday 24th January @ 8pm

[Maria Doyle Kennedy](#)

[Live Music](#)





Saturday 25th & Sunday 26th January

Weekend Art & Craft Popup

Art/Exhibition



Nathan Carter

This performance will have you rocking with all the classics hits like Wagon Wheel and more!

25th Jan @ University Concert Hall

[Learn More](#)



Ireland's Biggest Antiques Art & Vintage Fair

Come see Ireland's finest antique shops, art galleries and vintage dealers!

25th & 26th Jan @ Limerick Racecourse

[Learn More](#)