



Public Participation Network **Limerick**

About PPN Limerick

PPN Limerick is a network of community, voluntary, social inclusion and environmental groups/organisations, working together for a better Limerick through public participation in local democratic structures. Visit [our website](#) for more information

PPN Membership

Now stands at 285 members.

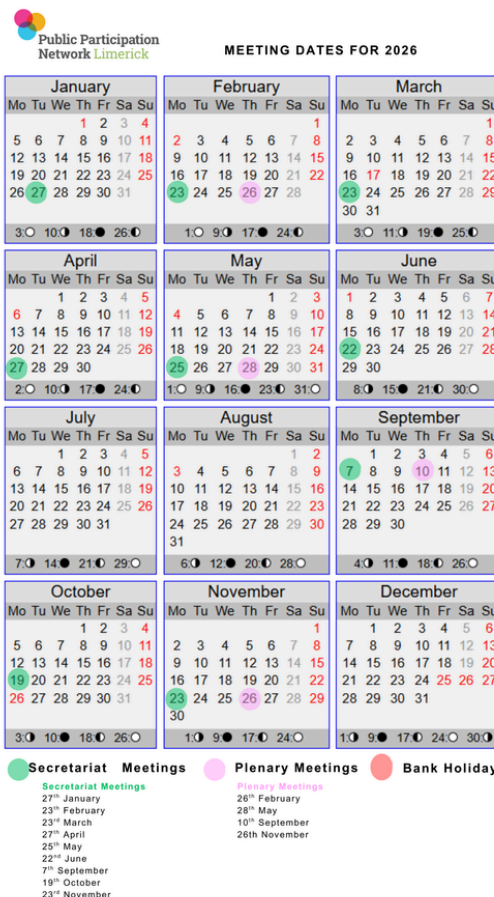
PPN Limerick membership continues to grow and you can check out all our members [on the Membership directory](#) on the PPN Limerick website. Register to join [HERE](#)

In this Newsletter

- **Local Enhancement Program (LEP) open for applications**
- **Northside FRC Consultation**
- **Community Safety Partnership seeking Committee Members**
- **Limerick Lifelong learning Festival dates**

PPN Limerick Update

We have set our Plenary Meeting dates for 2026, as well as Secretariat Meetings. you can view these [HERE](#). Please save the Plenary dates in your calendar.



Committee	Pillar	Nominees Name and Nominating Body
Climate Action Biodiversity & Environment SPC	Environmental	Seán Mcilfratrick An Taisce Limerick
Economic Development Enterprise, Tourism & Planning SPC	Environmental	Brian Leddin An Taisce Limerick
Community, Leisure, Arts, Heritage & Culture SPC	Community	Eileen McMahon Rose Fitzgerald Kennedy Autumn School
Local Community Development Committee	Environmental	Darragh Boyce An Taisce Limerick
	Social Inclusion	Tanya Dunworth

We have submitted the report regarding the appointment of our new Representatives for inclusion on the Agenda of the next Full Council Meeting on the 26th of January.

Our Sitting Committee Representatives completed Induction Training for SPC Members on the 14th of January. Another date will be scheduled for February. The slides may be of interest and can be viewed [HERE](#).

Local Enhancement Program (LEP) Funding open for applications



The Local Enhancement Programme 2026 will support groups, particularly in disadvantaged areas, with funding to carry out necessary repairs and improvements to their facilities, and to purchase equipment for example tables and chairs, tools and signage, canopies and training equipment etc. Facilities improvement works may also include, but are not limited to; improved access for persons with a disability; enhancing community participation for disadvantaged and marginalised groups, and; improving energy efficiency of community facilities to reduce ongoing costs.

Any not-for-profit community or voluntary group can apply. Commercial organisations and individuals are not eligible for funding.

The scheme is designed to ensure local priorities are identified and met, so as to improve and enhance community facilities for all. It is administered by Local Community Development Committees (LCDCs) in each Local Authority area. Applications should relate to one or more key priority areas identified in their LCDC's Local Economic and Community Plan (LECP) in order to be eligible for consideration.

Click [HERE](#) to register and make an application
and

Click [HERE](#) to view the scheme guideline.

Hare's Corner micro funding available for landowners



The Hare's Corner initiative is returning to Limerick for 2026

Applications opened on Jan 1st and will close Jan 18th.
to apply click [HERE](#)

The Hare's corner offers the opportunity to increase the mosaic of habitats for nature across Limerick City and County by applying for two of the following for your land:

- Mini-woodland
- Wildlife hedge
- Mini heritage orchard
- Wildlife pond
- Plan for Nature
- The Hare's Corner is an action under the [Limerick Biodiversity Action Plan 2025-2030](#)

Background to the Hare's Corner Initiative

The initiative is coordinated by Burrenbeo Trust, a national non-profit dedicated to helping people take positive action for their local landscapes. Its proven success means demand is high – so apply early!

The Hare's Corner in 2026 is being funded through a combination of public and private sector funding, including the National Parks and Wildlife Service's-NPWS - Local Biodiversity Action Fund, (85% NPWS and 15% participating local authorities), and is an action of the National Biodiversity Action Plan 2023 – 2030.

burrenbeotrust
connecting people and place

Community Water Development Fund and other highlights



APPLY FOR FUNDING

Got an idea to help improve water quality in your local area?

The **Community Water Development Fund 2026** is now open for applications. Community groups are invited to apply for funding for projects that improve the quality and boost the biodiversity of local streams, rivers, lakes and coastal bodies.

Funded by the Department of Housing, Local Government and Heritage and administered by the Local Authority Waters Programme (LAWPRO).

For more information visit www.lawaters.ie/cwdf

Local Authority **Waters** Programme
vibrant communities | catchment assessment | healthy waters

An Roinn Tithíochta, Rialtais Áitiúil agus Oidhreacht
 Department of Housing, Local Government and Heritage

LAWPRO's Community Water Development Fund is open at the moment and closing next Tuesday night the 20th January at 23.30

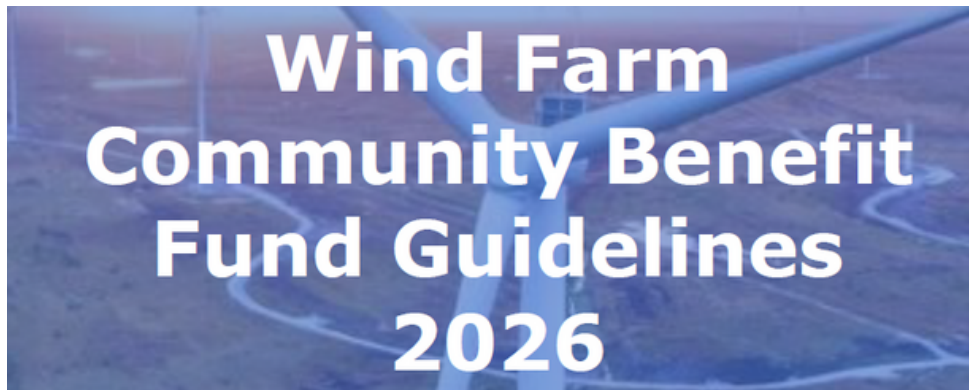
Groups are invited to apply for funding for projects that will improve water quality of your local stream, river, lake and coastal water body.

This fund welcomes applications from organisations who are planning projects that demonstrate **direct water quality actions**.

Here is a recording of the CWDF webinar [Community Water Development Fund - Local Authority Waters Programme](#)

Here is a link to the CWDF [online application](#).

2026 ESB Wind Farm Community Funds – Now Open



The 2026 ESB Wind Farm Community Funds are now open for applications until March 6th, 2026. For a full list of Wind Farm Community Funds included in this call, please click [HERE](#).

The fund is available to community and voluntary groups, non-profit groups or organisations with a charitable status. The Wind Farm Community Funds will prioritise projects and initiatives that support and benefit the areas surrounding ESB wholly owned and co-owned wind farms, in the following categories:

- Education and skills
- Health, safety and wellbeing
- Environment and habitat conservation
- Energy efficiency and sustainability
- Culture and heritage
- Recreation, sport and social inclusion
- Tourism (Raheenleagh & Castlepook only)

Applications may be made online at www.communitybenefitfunds.ie, please ensure you take some time to read the [Fund Guidelines](#), prior to submitting your application and visit the [help section of our website](#) for additional helpful documents. If you are registered from a previous call, you can use the same user name and password to apply to the 2026 fund. If you have lost or forgotten your password, please go to the "[Forgot Password](#)" tab, or contact SECAD.

Community Representatives sought for the Limerick Local Community Safety Partnership



Nominations will Close on the 30th of January

**Scan the code below for further information and to
Submit an EOI**



**If you have any questions please email:
communitysafety@limerick.ie
or call 086- 8094004**

Limerick Lifelong Learning Festival 2026- Invitation to submit events

Announcing
Limerick Lifelong Learning Festival 2026



Monday 20th - Sunday 26th April 2026

Learning Limerick
Together for a brighter future

Limerick Lifelong Learning Festival

unesco
Member
Global Network of
Learning Cities

Announcing the dates for this year's [Limerick Lifelong Learning Festival](#). The festival will run from **Monday 20th Sunday 26th April 2026**.

You are **invite you to get involved in the festival by running events**. Click [HERE](#) to submit your event details by Friday February 13th 2026.

See [HERE](#) for festival information.

The festival is a celebration of lifelong learning and promotes all sorts of learning in Limerick through a wide variety of creative, enjoyable and informative events.

The festival theme this year is based around the **power of connections and will have a particular focus on the fun and joy of learning and family-friendly events**.

The festival is being presented by the Learning Limerick Steering Group, which is representative of all the main stakeholders involved in promoting learning across Limerick.

Invitation to Participate – Northside FRC Partner Survey

NORTHSIDE FAMILY RESOURCE CENTRE



Invitation to participate in Northside Family Resource Centre Strategic Plan:

Have your say in shaping the next 5 years of Northside Family Resource Centre. The [Partner/ Stakeholder Survey](#) takes just 4 minutes to complete and will guide how we plan activities and services for the years ahead. The [2025 Community Survey](#), for service users and local residents is a quick way to tell us what's working well and what could be improved. Every response helps us build a stronger, more connected community.

Limerick City Residential Waste Management Survey

Supported by the Mayoral Programme, the Council has appointed consultants to carry out a feasibility study focused on creating a more efficient and sustainable waste management system for Limerick City.

As part of this study, they are seeking input from a wide range of stakeholders—including residents and businesses—to understand current practices and identify any challenges with the existing system. Your feedback will play a vital role in shaping improved waste management services for our city.

If you live in Limerick City or work in any aspect of waste management in the city, please complete the short survey linked below and share it with others who may have relevant insights.

[Limerick City Residential Waste Management Survey | Limerick City & County Council's Online Consultation, Survey and Application Form Portal](#)

Free literary event in Newcastle West library this month

Saturday poetry *in West Limerick*



Relax and enjoy a flowing river of words. Bring along a poem to read if you wish.

January 24th, 10:30am-11:30am.

Join Kathryn Mary Crowley in Newcastle West library.

Read more at www.KathrynMCrowley.com/news

Presented in association with Poetry Ireland.



Poetry in West Limerick
Enjoy a flowing river of words.

Date: Saturday January 24th, 2026.
Venue: Newcastlewest Library
Time: 10:30am-11:30am.

[View the website here](#)

[Facebook Post](#)

[Instagram](#)



Grow

Mental Health

WHO WE ARE:

We are a community of people drawn together by our first-hand experiences of mental health problems. Having found practical ways of helping each other recover from mental health challenges we developed what we refer to as The Grow Program. We meet weekly in locations all over Ireland and use our proven [12 Step Program](#) to recover from various forms of mental health problems.



For Adults 18+
33 Henry Street, Limerick

Come along and hear Who Grow is, What we do and how you can receive support for your Mental Health.

Contact Celia 086 1526966 or celiabrett@grow.ie for further information.

Heritage Organisations Support Fund



Brian Friel Trust Ltd
Offered funding to support the development of the Brian Friel Interpretive Centre.

Institute of Archaeologists of Ireland
Offered funding to support professional development for heritage practitioners.

Inishowen Maritime Museum
Offered funding to support sustainable growth and heritage impact.

Vincent Wildlife Trust
Offered funding to strengthen mammal conservation in Ireland.

**Our heritage lives and breathes.
Grants to keep it that way are now live too.**

Our heritage is part of who we are. It includes our culture, our architecture, our natural environment and much more. **The Heritage Organisations Support Fund is now open for applications** from heritage-focused companies limited by guarantee that demonstrate national or regional relevance.

 **An Chomhairle Oidhreachta
The Heritage Council**

[Heritage Organisations Support Fund \(HOSF\).](#)

This fund, open until Monday, January 26th is available for any heritage focused organisation.

Through this fund, the Heritage Council aims to support organisations to:

- Build long-term strength and stability
- Plan for the future and grow strategically
- Adopt environmentally friendly practices and contribute to climate action.

This fund supports core operational work, not standalone projects. It helps heritage organisations to remain stable, plan for the future, invest in staff and governance, and contribute to climate action and public benefit. All funded work should align with the goals of [The Heritage Council's Strategic Plan 2023-2028.](#)

View their [promotional video!](#)

Limerick Walking Guide



With the weather improving you can find routes and maps of the many fantastic walking trails in Limerick City and County [HERE](#)

Balancing Stress - A HSE Resource for sharing with PPNs

The HSE has developed a Free, easy-to-access online programme called 'Balancing Stress' to support people across Ireland in managing common mental health difficulties including stress, anxiety and low mood.

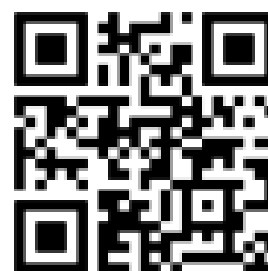
The HSE has developed a Free, easy-to-access online programme called 'Balancing Stress' to support people across Ireland in managing everyday mental difficulties such as stress, anxiety, low mood and worry.

The Balancing Stress programme offers six online video sessions (each around 35 minutes) covering key topics including managing stress, worry, anxiety, low mood, and relationship stress. This online programme offers people evidence-based tools to manage stress effectively and enhance their mental wellbeing.

The programme is delivered by Dr Niamh Clarke, HSE Principal Psychologist, and features expert interviews with Professor Alan Carr, UCD School of Clinical Psychology.

You can watch the videos at your own pace, on your own time, using a phone, tablet or laptop.

The easy to use QR code will take you directly to the programme. If you require further information, please do not hesitate to contact me at: yvonne.gilsenan@hse.ie



PPN Stakeholder Training

PPN Stakeholder Training

The online only self-paced training videos programme for PPN stakeholders has been developed with SJI.

Registrations for the online only training is now open.

Social Justice Ireland is providing this training on behalf of the Department.

The online only training covers the following:

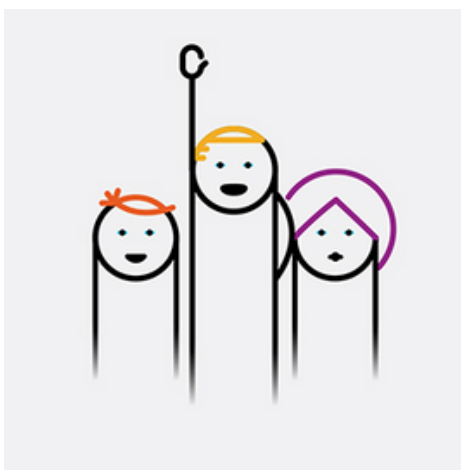
- An Introduction to the PPNs (2 Modules)
- Local Government Budgets
- PPNs and Local Government
- Effective Participation in Consultations
- Effective Facilitation
- Strategic Planning
- Measuring Outcomes and Impacts

This is online only and is intended for self-directed learning at the learner's own pace. Social Justice Ireland will provide some support via the webform on each Module page. There are no scheduled classes as part of this training.

To register, please complete the Registration Form at the following link: : [Register for Training_|_Social Justice Ireland](#)

PPN Limerick Documents

- The [PPN Website](#) has all our information and details regarding membership and groups, linkage groups and documentation.
- The [PPN Constitution](#) details how we operate:
- Our [Strategic Plan](#) outlines our goals for the next 5 years:
- Our [2026 Workplan](#) was agreed by the Plenary at our AGM on the 26th of November 2025.
- The [PPN Handbook](#) is the national document which guides the processes that all PPN's Nationally must follow.



MAYORAL PROGRAMME

Mayor of Limerick, John Moran, has unveiled an ambitious vision for the future of Limerick City and County with the publication of the Limerick Mayoral Programme 2024-2029, titled More for Limerick. This comprehensive 138-page document outlines the Mayor's vision and objectives for his term in office, as mandated by the Local Government (Mayor of Limerick) and Miscellaneous Provisions Act 2024.

Mayoral Programme, More for Limerick, 2024-2029

