



# Public Participation Network Limerick



## About PPN Limerick

PPN Limerick is a network of community, voluntary, social inclusion and environmental groups/organisations, working together for a better Limerick through public participation in local democratic structures. Visit [our website](#) for more information

## PPN Membership

Now stands at 287 members.

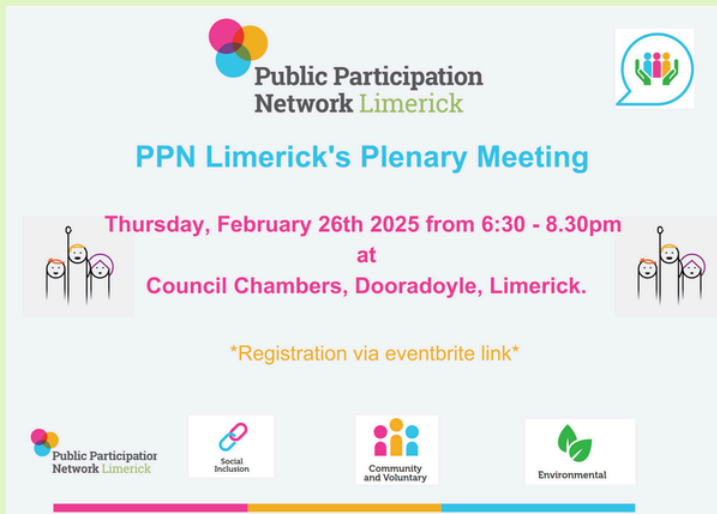
PPN Limerick membership continues to grow and you can check out all our members [on the Membership directory](#) on the PPN Limerick website. Register to join [HERE](#)

## In this Newsletter

- **Registration Open for February Plenary Meeting**
- **Local Enhancement Program (LEP) open for applications**
- **REGISTER YOUR INTEREST IN RYDER CUP VOLUNTEER ROLES**



# PPN Limerick Update



**Public Participation Network Limerick**

**PPN Limerick's Plenary Meeting**

Thursday, February 26th 2025 from 6:30 - 8.30pm  
at  
Council Chambers, Dooradoyle, Limerick.

\*Registration via eventbrite link\*

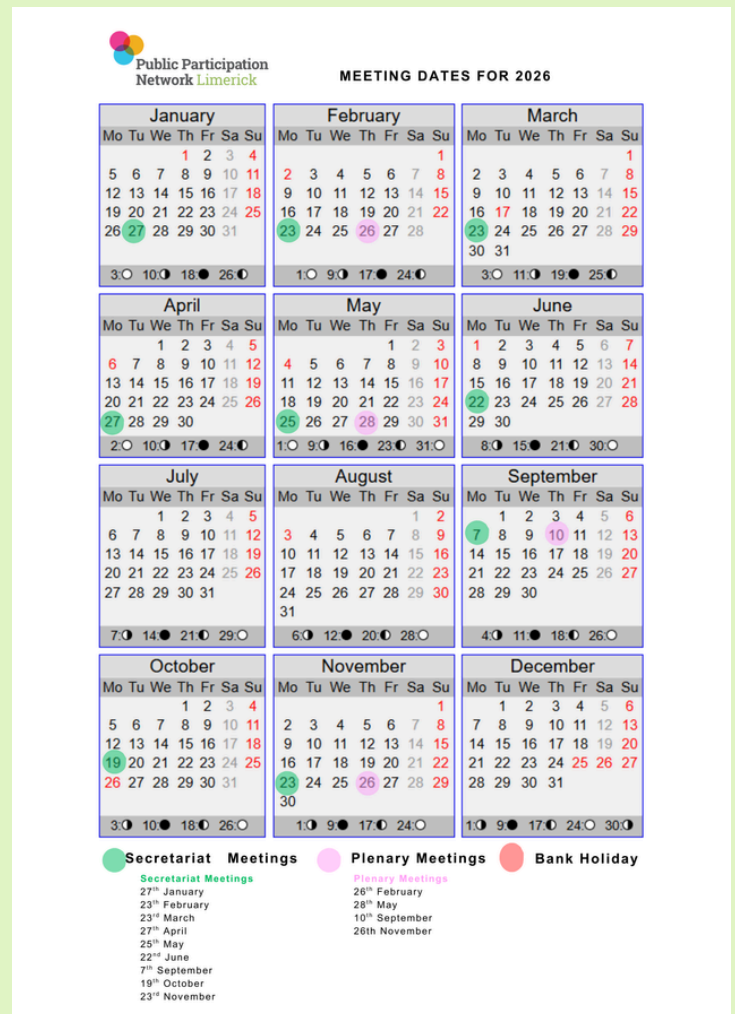
Public Participation Network Limerick | Social Inclusion | Community and Voluntary | Environmental

## Notice of Plenary

We will hold our first Plenary Meeting of 2026 on the 26th of February at the Council Chambers in Dooradoyle.

Register to attend [HERE](#)

We have set our Plenary Meeting dates for 2026, as well as the Secretariat Meetings. you can view these [HERE](#). Please save the Plenary dates in your calendar.



**Public Participation Network Limerick**

**MEETING DATES FOR 2026**

January	February	March
Mo Tu We Th Fr Sa Su 1 2 3 4 5 6 7 8 9 10 11 12 13 14 15 16 17 18 19 20 21 22 23 24 25 26 27 28 29 30 31 3:0 10:0 18:0 26:0	Mo Tu We Th Fr Sa Su 1 2 3 4 5 6 7 8 9 10 11 12 13 14 15 16 17 18 19 20 21 22 23 24 25 26 27 28 1:0 9:0 17:0 24:0	Mo Tu We Th Fr Sa Su 1 2 3 4 5 6 7 8 9 10 11 12 13 14 15 16 17 18 19 20 21 22 23 24 25 26 27 28 29 30 31 3:0 11:0 19:0 25:0
April	May	June
Mo Tu We Th Fr Sa Su 1 2 3 4 5 6 7 8 9 10 11 12 13 14 15 16 17 18 19 20 21 22 23 24 25 26 27 28 29 30 2:0 10:0 17:0 24:0	Mo Tu We Th Fr Sa Su 1 2 3 4 5 6 7 8 9 10 11 12 13 14 15 16 17 18 19 20 21 22 23 24 25 26 27 28 29 30 31 1:0 9:0 16:0 23:0 31:0	Mo Tu We Th Fr Sa Su 1 2 3 4 5 6 7 8 9 10 11 12 13 14 15 16 17 18 19 20 21 22 23 24 25 26 27 28 29 30 8:0 15:0 21:0 30:0
July	August	September
Mo Tu We Th Fr Sa Su 1 2 3 4 5 6 7 8 9 10 11 12 13 14 15 16 17 18 19 20 21 22 23 24 25 26 27 28 29 30 31 7:0 14:0 21:0 29:0	Mo Tu We Th Fr Sa Su 1 2 3 4 5 6 7 8 9 10 11 12 13 14 15 16 17 18 19 20 21 22 23 24 25 26 27 28 29 30 31 6:0 12:0 20:0 28:0	Mo Tu We Th Fr Sa Su 1 2 3 4 5 6 7 8 9 10 11 12 13 14 15 16 17 18 19 20 21 22 23 24 25 26 27 28 29 30 4:0 11:0 18:0 26:0
October	November	December
Mo Tu We Th Fr Sa Su 1 2 3 4 5 6 7 8 9 10 11 12 13 14 15 16 17 18 19 20 21 22 23 24 25 26 27 28 29 30 31 3:0 10:0 18:0 26:0	Mo Tu We Th Fr Sa Su 1 2 3 4 5 6 7 8 9 10 11 12 13 14 15 16 17 18 19 20 21 22 23 24 25 26 27 28 29 30 1:0 9:0 17:0 24:0	Mo Tu We Th Fr Sa Su 1 2 3 4 5 6 7 8 9 10 11 12 13 14 15 16 17 18 19 20 21 22 23 24 25 26 27 28 29 30 31 1:0 9:0 17:0 24:0 30:0

● Secretariat Meetings  
● Plenary Meetings  
● Bank Holiday

**Secretariat Meetings**  
 27<sup>th</sup> January  
 23<sup>rd</sup> February  
 23<sup>rd</sup> March  
 27<sup>th</sup> April  
 25<sup>th</sup> May  
 22<sup>nd</sup> June  
 7<sup>th</sup> September  
 19<sup>th</sup> October  
 23<sup>rd</sup> November

**Plenary Meetings**  
 26<sup>th</sup> February  
 28<sup>th</sup> May  
 10<sup>th</sup> September  
 26<sup>th</sup> November

## Local Enhancement Program (LEP) Funding open for applications



The Local Enhancement Programme 2026 will support groups, particularly in disadvantaged areas, with funding to carry out necessary repairs and improvements to their facilities, and to purchase equipment for example tables and chairs, tools and signage, canopies and training equipment etc. Facilities improvement works may also include, but are not limited to; improved access for persons with a disability; enhancing community participation for disadvantaged and marginalised groups, and; improving energy efficiency of community facilities to reduce ongoing costs.

**Any not-for-profit community or voluntary group can apply.** Commercial organisations and individuals are not eligible for funding.

The scheme is designed to ensure local priorities are identified and met, so as to improve and enhance community facilities for all. It is administered by Local Community Development Committees (LCDCs) in each Local Authority area. Applications should relate to one or more key priority areas identified in their LCDC's Local Economic and Community Plan (LECP) in order to be eligible for consideration.

Click [HERE](#) to register and make an application  
and

Click [HERE](#) to view the scheme guideline.

## Register your interest to Volunteer at the 2027 Ryder Cup



### Applications are open to become a 2027 Ryder Cup Volunteer

Application window closes on 1st April 2026.

[APPLY HERE](#)

The 2027 Ryder Cup will be the iconic event's 100th anniversary match and will take place at Adare Manor in County Limerick, Ireland, from 13-19th of September 2027.

Applications are now open to become a volunteer for the 2027 Ryder Cup at Adare Manor in County Limerick, Ireland, offering the chance to be part of one of the world's greatest sporting events as it celebrates its 100th anniversary.

There will be two types of volunteer role available, with the traditional on-course Marshal role joined by a new-look 'Ambassador' role that will support the overall fan experience and the smooth running of the event.

Applications for both roles officially opened today and close on 1st April 2026. You can apply via the dedicated volunteer page on the Ryder Cup website here. There will be approximately 2,000 roles available and more than 24,000 people have already registered their interest in applying for voluntary roles via the Ryder Cup website. Those who registered their interest will be contacted directly via email by Ryder Cup Europe in the coming days to complete the application form.

Applicants can initially apply for an Ambassador or Marshal role and will be notified if their application has been successful in August 2026. Further details on their specific role at the event will then follow in November 2026. Ambassadors will be recruited to help deliver legendary Irish hospitality to the thousands of fans visiting from around the world. They will be stationed at key locations - from transport hubs across County Limerick to the entrances to the golf course and key locations on-site such as the Fan Village - where they will guide visitors, answer questions and help create memorable experiences. No golf knowledge or experience is needed, just enthusiasm and a collaborative mindset.

## 2026 ESB Wind Farm Community Funds – Now Open

A graphic with a blue background showing a wind turbine. The text "Wind Farm Community Benefit Fund Guidelines 2026" is written in white, bold, sans-serif font, centered on the image.

# Wind Farm Community Benefit Fund Guidelines 2026

The 2026 ESB Wind Farm Community Funds are now open for applications until March 6th, 2026. For a full list of Wind Farm Community Funds included in this call, please click [HERE](#).

The fund is available to community and voluntary groups, non-profit groups or organisations with a charitable status. The Wind Farm Community Funds will prioritise projects and initiatives that support and benefit the areas surrounding ESB wholly owned and co-owned wind farms, in the following categories:

- Education and skills
- Health, safety and wellbeing
- Environment and habitat conservation
- Energy efficiency and sustainability
- Culture and heritage
- Recreation, sport and social inclusion
- Tourism (Raheenleagh & Castlepook only)

Applications may be made online at [www.communitybenefitfunds.ie](http://www.communitybenefitfunds.ie), please ensure you take some time to read the [Fund Guidelines](#), prior to submitting your application and visit the [help section of our website](#) for additional helpful documents. If you are registered from a previous call, you can use the same user name and password to apply to the 2026 fund. If you have lost or forgotten your password, please go to the "[Forgot Password](#)" tab, or contact SECAD.

## Limerick Lifelong Learning Festival 2026- Invitation to submit events

Announcing  
Limerick Lifelong Learning Festival 2026



Monday 20th - Sunday 26th April 2026

Learning Limerick  
Together for a brighter future

Limerick Lifelong Learning Festival

unesco  
Member  
Global Network of  
Learning Cities

Announcing the dates for this year's [Limerick Lifelong Learning Festival](#). The festival will run from **Monday 20<sup>th</sup> Sunday 26<sup>th</sup> April 2026**.

You are invite you to get involved in the festival by running events. Click [HERE](#) to submit your event details by Friday February 13<sup>th</sup> 2026.

See [HERE](#) for festival information.

The festival is a celebration of lifelong learning and promotes all sorts of learning in Limerick through a wide variety of creative, enjoyable and informative events.

The festival theme this year is based around the **power of connections and will have a particular focus on the fun and joy of learning and family-friendly events.**

The festival is being presented by the Learning Limerick Steering Group, which is representative of all the main stakeholders involved in promoting learning across Limerick.

## Trees.limerick.ie website to record newly planted trees across Limerick

Limerick City and County Council has created [Trees.limerick.ie](https://trees.limerick.ie) website to record newly planted trees across Limerick City and County.

Any individual, community group or business can now register any new tree planted.

This will enable to track the progress and count of trees planted in Limerick City and County.

[Trees.limerick.ie](https://trees.limerick.ie) is supported by the Mayor of Limerick, John Moran who is seeking to reach a target of at least one tree to be planted by every citizen in Limerick.

The link is <https://trees.limerick.ie/> and below is the QR code:



## Circular Cups for Community Events in the Southern Region



Elevate your small scale event and festival by choosing to rent reusable cups. You will make a big difference to the environment by preventing waste and reducing litter.

Organisers of small scale events and festivals can now avail of beautifully designed robust, pint, half pint and hot beverage cups with or without lids at a reasonable cost.

More Information can be found [HERE](#)

### **Want to rent cups?**

Here's a checklist:

1. Is your event or festival small-scale & not for profit?
2. Is your event/festival happening in Carlow, Clare, Cork City, Cork County, Kerry, Kilkenny, Limerick, Tipperary, Waterford and Wexford?

If yes is the answer to both these questions,  
click on this button to order cups:

[\*\*Order Cups\*\*](#)

**Connecting Nationwide this February**



**Irish  
Environmental  
Network**

[Irish Environmental Network February 2026 Newsletter](#)

## Media Release: Limerick City and County Council Encourages Residents to Check the Register and Provide Missing Information



Limerick City and County Council Encourages Residents to Check the Register and Provide Missing Information

Visit: [Register of Electors | Limerick.ie](https://www.limerick.ie/registerofelectors)

As part of a National Project, Limerick City and County Council is currently updating the existing records on the Register of Electors and is encouraging everyone living in Limerick to take a moment to ensure their details are correct and up to date. National data shows that almost four out of five voter records do not yet include a PPSN, and more than one in four are still missing an Eircode and, or a date of birth.

This missing information is one of the main reasons the national register contains duplicates, outdated records and incorrect addresses.

The easiest way to check or update your information is by visiting [www.checktheregister.ie](https://www.checktheregister.ie).

### **Why Checking the Register Matters**

Ensuring you are correctly registered to vote is important because:

It is your responsibility to make sure you're registered - individuals must confirm or update their own details.

Your citizenship determines what elections you can vote in - While every resident is entitled to be registered, your citizenship determines your voting entitlements - for example, Irish citizens may vote in all elections and referendums, while other categories (British, EU, non-EU) have differing voting rights.

Keeping your details current ensures accuracy. Up-to-date records reduce duplication and ensure efficient administration of elections across Limerick.

For any queries, please contact the Register of Electors team at [registerofelectors@limerick.ie](mailto:registerofelectors@limerick.ie).

For more information visit [Register of Electors | Limerick.ie](https://www.limerick.ie/registerofelectors)

Remember, Your Vote is Your Voice!

# The Limerick Opera & Music Festival

*"Opera For All"*

## The Catherine Hayes Gala Concert

### *A Night of Musical Brilliance and Celebration*

Join us for an unforgettable evening celebrating the legacy of **Catherine Hayes**, Ireland's beloved 19th-century soprano, often hailed as *"The Swan of Erin."*

Experience a gala concert featuring internationally acclaimed performers, and timeless arias that pay tribute to Hayes's remarkable artistry and global influence.

*Highlights include:*

- A program of exquisite operatic arias and classical favourites
- Performed by two stellar Irish voices of today, sopranos Jean Wallace and Ami Hewitt, with distinguished collaborative pianist Irina Dernova.
- Special tributes to Catherine Hayes's life and legacy



The ticket link: <https://eventmaster.ie/event/preview/w209UPySRQ>

MC is Lorcan Murray from Lyric Fm

Venue: *St. Mary's Cathedral, Bridge Street, Limerick.*

*Sunday, March 08th, 2026, 19:00*

# Invitation to Participate – Northside FRC Partner Survey

## NORTHSIDE FAMILY RESOURCE CENTRE



Invitation to participate in Northside Family Resource Centre Strategic Plan:

Have your say in shaping the next 5 years of Northside Family Resource Centre. The [Partner/ Stakeholder Survey](#) takes just 4 minutes to complete and will guide how we plan activities and services for the years ahead. The [2025 Community Survey](#), for service users and local residents is a quick way to tell us what's working well and what could be improved. Every response helps us build a stronger, more connected community.



# Grow

## Mental Health

### WHO WE ARE:

We are a community of people drawn together by our first-hand experiences of mental health problems. Having found practical ways of helping each other recover from mental health challenges we developed what we refer to as The Grow Program. We meet weekly in locations all over Ireland and use our proven [12 Step Program](#) to recover from various forms of mental health problems.



***For Adults 18+***  
***33 Henry Street, Limerick***

**Come along and hear Who Grow is, What we do and how you can receive support for your Mental Health.**

**Contact Celia 086 1526966 or [celiabrett@grow.ie](mailto:celiabrett@grow.ie) for further information.**

## Limerick Walking Guide



With the weather (occasionally) improving you can find routes and maps of the many fantastic walking/ running trails in Limerick City and County [HERE](#)

## Balancing Stress - A HSE Resource for sharing with PPNs

The HSE has developed a Free, easy-to-access online programme called 'Balancing Stress' to support people across Ireland in managing common mental health difficulties including stress, anxiety and low mood.

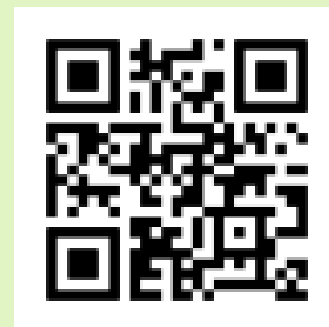
The HSE has developed a Free, easy-to-access online programme called 'Balancing Stress' to support people across Ireland in managing everyday mental difficulties such as stress, anxiety, low mood and worry.

The Balancing Stress programme offers six online video sessions (each around 35 minutes) covering key topics including managing stress, worry, anxiety, low mood, and relationship stress. This online programme offers people evidence-based tools to manage stress effectively and enhance their mental wellbeing.

The programme is delivered by Dr Niamh Clarke, HSE Principal Psychologist, and features expert interviews with Professor Alan Carr, UCD School of Clinical Psychology.

You can watch the videos at your own pace, on your own time, using a phone, tablet or laptop.

The easy to use QR code will take you directly to the programme. If you require further information, please do not hesitate to contact me at: [yvonne.gilsenan@hse.ie](mailto:yvonne.gilsenan@hse.ie)



## PPN Stakeholder Training

### PPN Stakeholder Training

The online only self-paced training videos programme for PPN stakeholders has been developed with SJI.

Registrations for the online only training is now open.

Social Justice Ireland is providing this training on behalf of the Department.

The online only training covers the following:

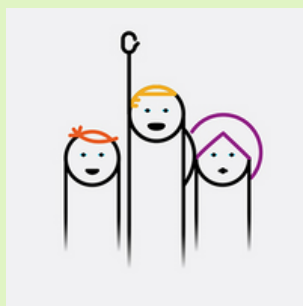
- An Introduction to the PPNs (2 Modules)
- Local Government Budgets
- PPNs and Local Government
- Effective Participation in Consultations
- Effective Facilitation
- Strategic Planning
- Measuring Outcomes and Impacts

This is online only and is intended for self-directed learning at the learner's own pace. Social Justice Ireland will provide some support via the webform on each Module page. There are no scheduled classes as part of this training.

To register, please complete the Registration Form at the following link: : [Register for Training\\_|\\_Social Justice Ireland](#)

## PPN Limerick Documents

- The [PPN Website](#) has all our information and details regarding membership and groups, linkage groups and documentation.
- The [PPN Constitution](#) details how we operate:
- Our [Strategic Plan](#) outlines our goals for the next 5 years:
- Our [2026 Workplan](#) was agreed by the Plenary at our AGM on the 26<sup>th</sup> of November 2025.
- The [PPN Handbook](#) is the national document which guides the processes that all PPN's Nationally must follow.
- Training slides from recent Induction training for SPC Members can be viewed [HERE](#). They include background information that may be of interest.



## MAYORAL PROGRAMME

Mayor of Limerick, John Moran, has unveiled an ambitious vision for the future of Limerick City and County with the publication of the Limerick Mayoral Programme 2024-2029, titled More for Limerick. This comprehensive 138-page document outlines the Mayor's vision and objectives for his term in office, as mandated by the Local Government (Mayor of Limerick) and Miscellaneous Provisions Act 2024.

### Mayoral Programme, More for Limerick, 2024-2029

