



Public Participation Network Limerick

About PPN Limerick

PPN Limerick is a network of community, voluntary, social inclusion and environmental groups/organisations, working together for a better Limerick through public participation in local democratic structures. Visit [our website](#) for more information

PPN Membership

Now stands at 300 members.

PPN Limerick membership continues to grow and you can check out all our members [on the Membership directory](#) on the PPN Limerick website.

Register to join [HERE](#)

In this Newsletter

- **PPN Update/ Survey**
- **LEADER 2023 - 2027 Funding Information Clinics**
- **Pride of Place open for EOI's**
- **MS Ireland is inviting EOI's from groups in Limerick City seeking space for their services.**
- **Training and Consultation opportunities**

PPN Limerick Updates

We have set our Plenary Meeting dates for 2026, as well as the Secretariat Meetings.

you can view these [HERE](#).

Any member can submit a motion or item for discussion before these Meetings by emailing ppn@limerick.ie.

[PPN Limerick Survey Link](#)

Please complete this survey to make the Secretariat aware of any issues or opinions you have regarding our engagement with the council/ Committees in advance of us signing our MOU.

A part of a program they are completing a member is researching the feasibility of a climate business venture focusing on the development of a network for environment-focused visitor destinations, that would help them connect with each other and with visitors. He would appreciate if you could take the time to complete the survey

[HERE](#)

[Update from February Plenary Meeting.](#)

At the Plenary Meeting of the Public Participation Network Limerick (PPNL) held on 26th of February 2026, one of the Motions put forward asked that the PPN **formally request that Limerick City and County Council (LCCC) commit to live streaming all public meetings and archiving the recordings in a publicly accessible online space.**

Members agreed that this step would in principle strengthen transparency and make it easier for the public to follow the work of the Council and engage with local decision-making.

A letter expressing this decision was sent to LCCC and a Statement was also issued to the Media.

You can view the view the Statement

[HERE](#)

IPB Pride of Place Competition 2026 open for EOI's

Limerick City and County Council is pleased to invite Expressions of Interest from community groups, voluntary organisations, and local initiatives wishing to be considered for nomination to the IPB Pride of Place Competition 2026.

Pride of Place is a prestigious, all island competition that recognises and celebrates the vital contribution made by community groups to local society. It highlights the dedication, commitment, and impact of volunteers working to enhance the quality of life in their areas.

Submissions are welcome from groups who:

- Demonstrate strong community spirit and volunteerism
- Show evidence of inclusive and meaningful community engagement
- Deliver positive social, environmental, or cultural impact
- Are committed to long term, sustainable community development

You will find more information [HERE](#)

How to Apply:

Please send your Expression of Interest Form by email to prideofplace@limerick.ie

Closing date: 24th April 2026

LEADER 2023 - 2027

Funding Information Clinics



Come and meet with a LEADER Development Officer to discuss your project ideas in relation to enterprise, community or environmental projects while we are in your local area.

Foynes

Dooradoyle

Dromcollogher

Date: March 25th

Date: March 25th

Date: April 13th

Time: 7.00pm - 9.00pm

Time: 10.00am - 1.00pm

Time: 2.00 - 4.00pm

Venue: Foynes
Community Centre

Venue: Dooradoyle
Council Offices

Venue: Dromcollogher
Community Centre

**Clinics are open to drop-ins, however, booking is recommended.
For further information and to book your place, email soshea@wlr.ie
or call 087 0957653**



Rialtas
na hÉireann
Government
of Ireland

Tionscadal Éireann
Project Ireland
2040

Arna chomhchistiú ag An Roinn Forbartha Tuaithe agus Pobail agus Gaeltachta
Co-funded by the Department of Rural and Community Development and the Gaeltacht

Ár dTodhchaí
Tuaithe
Our Rural
Future



Arna chomhchistiú ag
an Aontas Eorpach
Co-funded by
the European Union

LCDC
Limerick Local Community Development
Centres



Comhairle Cathrach
& Contae Luimnigh
Limerick City
& County Council



Forbairt Iarthar Luimní
West Limerick Resources

More LEADER Workshops

LEADER 2023 TO 2027 Application Clinics



Are you a community group, small business or social enterprise?

With the LEADER 2023-2027 Programme NOW OPEN to new applications, come and meet with a member of our LEADER team to discuss your project ideas and grant aid while we are in your area.

9

APRIL

KILMALLOCK

10.30AM TO 3.30PM

KILMALLOCK AREA COUNCIL OFFICE (V35 K497)

16

APRIL

CAHERCONLISH

4.00PM TO 7.00PM

CAHERCONLISH MILLENNIUM CENTRE (V94 CC60)

22

APRIL

KILFINANE

6.00PM TO 8.00PM

TEACH NA CILLE (V35 KW01)

Due to limited times, please contact one of our LEADER Development Officers to book



Katie Murray

kmurray@wlr.ie

087 357 1310

Aimee Grigg

agrigg@wlr.ie

087 356 3880

Conservation Advice Grant Scheme for Traditional Houses Open for Applications

The Conservation Advice Grant Scheme is a funding scheme to provide grants for expert conservation advice to support the refurbishment of properties under two streams.

Stream 1

Stream 1 of the scheme is open to owners of traditional houses in villages, towns, and cities where the building is a Protected Structure and/or an historic structure within an Architectural Conservation Area.

Buildings previously used for commercial purposes also qualify for the scheme where the intended use is as a single dwelling or a single/multiple dwelling above the shop.

Stream 2

Stream 2 of the scheme is open to owners of Traditional Farmhouses where the building is a Protected Structure and/or an historic farmhouse located within an Architectural Conservation Area and/or a vernacular farmhouse which has no statutory protection.

The Conservation Advice Grant Scheme provides grants to cover 67% of the costs (up to a maximum grant of €5,000) of having a conservation expert with proven and appropriate expertise:

For more information on the Scheme click [HERE](#)

The closing date for receipt of completed applications is
Friday, 8th May at 5pm.

Any queries should be directed to conservationadvicegrants@housing.gov.ie

Call for Expressions of Interest – Community Space, Limerick Opportunity

MS Ireland is inviting expressions of interest from community, voluntary, and charitable organisations in Limerick City that are **seeking space for their services.**

About the Building

Located at Springfield, Singland Road (V94 P237), this 10,500 sq. ft. two-storey property (purchased June 2024 with support from the JP McManus Pro-Am Fund) is currently under development. The ground floor will house MS Ireland services, with completion expected by September 2026.

Available Space

Second floor: approx. 3,790 sq. ft.

Shell and core (fit-out flexible to tenant needs)

Accessible (stairs; lift can be installed)

Who It's For

Organisations aligned with MS Ireland's mission, particularly in health, disability, and community support.

Next Steps

Early engagement is encouraged to shape the space. Get in touch to express interest or discuss options. **Please contact**

Mary McCusker, 086 144 8767 or email: marym@ms-society.ie.



Women's
Collective
Ireland
Limerick

Community workers' insights survey

This survey seeks to gather the perspectives of community workers on women's participation, equality, and community infrastructure in the Limerick region and surrounding areas.

We are particularly interested in your insights on women's participation in local decision-making, the availability and accessibility of women-centred community spaces, barriers to equality and inclusion, and how broader societal dynamics are experienced at community level.



Thank you for sharing
your views

www.womenscollective.ie/wci-limerick

Register your interest to Volunteer at the 2027 Ryder Cup



Applications are open to become a 2027 Ryder Cup Volunteer

Application window closes on 1st April 2026.

[APPLY HERE](#)

The 2027 Ryder Cup will be the iconic event's 100th anniversary match and will take place at Adare Manor in County Limerick, Ireland, from 13-19th of September 2027.

Applications are now open to become a volunteer for the 2027 Ryder Cup at Adare Manor in County Limerick, Ireland, offering the chance to be part of one of the world's greatest sporting events as it celebrates its 100th anniversary.

There will be two types of volunteer role available, with the traditional on-course Marshal role joined by a new-look 'Ambassador' role that will support the overall fan experience and the smooth running of the event.

Applications for both roles officially opened today and close on 1st April 2026. You can apply via the dedicated volunteer page on the Ryder Cup website here. There will be approximately 2,000 roles available and more than 24,000 people have already registered their interest in applying for voluntary roles via the Ryder Cup website. Those who registered their interest will be contacted directly via email by Ryder Cup Europe in the coming days to complete the application form.

Applicants can initially apply for an Ambassador or Marshal role and will be notified if their application has been successful in August 2026. Further details on their specific role at the event will then follow in November 2026. Ambassadors will be recruited to help deliver legendary Irish hospitality to the thousands of fans visiting from around the world. They will be stationed at key locations - from transport hubs across County Limerick to the entrances to the golf course and key locations on-site such as the Fan Village - where they will guide visitors, answer questions and help create memorable experiences. No golf knowledge or experience is needed, just enthusiasm and a collaborative mindset.



Training

Hospital Family Resource Centre in partnership with PPN Limerick

**Manual Handling
Training for
Community Groups**
Monday 13th April 2026
9.30 a.m. to 11.30 .am.

At Hospital FRC
Eircode V35 RP26



**Public Participation
Network Limerick**

To book a place contact

**Martha Potter
087 2813341**



Sport Ireland Diversify the Volunteer Base Survey

Diversify the Volunteer Base in Sport Insights Report is now underway. S3 Solutions are delighted to have been appointed by Sport Ireland to undertake this important research study, which aims to broaden the volunteer base.

The input of individuals (both volunteering and non-volunteering) from across the country is vital to inform the development of this research, which will directly influence practice within the sports sector at a local, regional and national level. We would deeply appreciate your assistance in raising awareness of the digital survey across your network of volunteers and any stakeholder organisations within your network who serve the needs of underrepresented groups, such as Women, People with Disabilities, Ethnic Minorities, LGBTQI+, Traveller/Roma Communities, Youth, and Older People.

We are really keen to see the views of those currently volunteering and those who face barriers to volunteering reflected in the report recommendations.

This survey will provide us with insights into the experience of volunteers and non-volunteers as well as underrepresented groups which improve our understanding of the barriers to participation and the value gained from participation in volunteering also. It will take approximately 8 minutes to complete. **The survey can be accessed via the following link and will close on Monday 13th April 2026 at 5pm.**

<https://app.voiceform.com/to/4cVPosigareRuir9>

Migrant Integration Strategy Survey

Limerick City are developing a strategy for Limerick City Council are developing their Migrant Integration Strategy and we are working with local community groups to hear from them on how Limerick can be more inclusive to migrants

- 1) Stakeholder survey - those working with migrants [HERE](#)
- 2) Community survey - migrant community themselves [HERE](#)



“Hop To It” and Help Track Local Frogs



Although well known, the common frog (*Rana temporaria*) is Ireland’s only native frog species and is listed as vulnerable across Europe. Frogs are considered important biological indicators because their skin is highly sensitive to pollution. Their presence or absence can reveal much about water quality and local environmental conditions. They are protected under both the EU Habitats Directive and the Irish Wildlife Act. Why not participate in the “Hop It” nationwide survey and report your sightings of frog spawn, tadpoles, froglets or adult frogs. These simple records play a crucial role in monitoring frog populations and understanding the health of the environments they depend on.

How to Take Part

If you spot frog spawn, tadpoles, froglets or adult frogs in your garden, local green space or while out walking, you can submit records directly to the IPCC at:

- www.ipcc.ie
- Email bogs@ipcc.ie
- Phone 045 860133

Records can also be submitted to the National Biodiversity Data Centre at <https://records.biodiversityireland.ie/start-recording>.

Further Details on [Limerick City and County Council Encourages Public to “Hop To It” and Help Track Local Frogs | Limerick.ie](#)

Trees.limerick.ie website to record newly planted trees across Limerick

Limerick City and County Council has created [Trees.limerick.ie](https://trees.limerick.ie) website to record newly planted trees across Limerick City and County.

Any individual, community group or business can now register any new tree planted.

This will enable to track the progress and count of trees planted in Limerick City and County.

[Trees.limerick.ie](https://trees.limerick.ie) is supported by the Mayor of Limerick, John Moran who is seeking to reach a target of at least one tree to be planted by every citizen in Limerick.

The link is <https://trees.limerick.ie/> and below is the QR code:



Public consultation on the new Healthy Ireland Framework



The Department of Health is currently undertaking a public consultation on the new Healthy Ireland Framework.

They are inviting organisations and their networks to share their views and help shape the future direction of health and wellbeing policy in Ireland.

The consultation is open until **22nd of April** and submissions can be made online via the QR Code above or at the following link:

HERE



Grow

Mental Health

WHO WE ARE:

We are a community of people drawn together by our first-hand experiences of mental health problems. Having found practical ways of helping each other recover from mental health challenges we developed what we refer to as The Grow Program. We meet weekly in locations all over Ireland and use our proven [12 Step Program](#) to recover from various forms of mental health problems.



For Adults 18+
33 Henry Street, Limerick

Come along and hear Who Grow is, What we do and how you can receive support for your Mental Health.

Contact Celia 086 1526966 or celiabrett@grow.ie for further information.

Limerick Walking Guide



With the weather (occasionally) improving you can find routes and maps of the many fantastic walking/ running trails in Limerick City and County [HERE](#)

Circular Cups for Community Events in the Southern Region



Elevate your small scale event and festival by choosing to rent reusable cups. You will make a big difference to the environment by preventing waste and reducing litter.

Organisers of small scale events and festivals can now avail of beautifully designed robust, pint, half pint and hot beverage cups with or without lids at a reasonable cost.

More Information can be found [HERE](#)

Want to rent cups?

Here's a checklist:

1. Is your event or festival small-scale & not for profit?
2. Is your event/festival happening in Carlow, Clare, Cork City, Cork County, Kerry, Kilkenny, Limerick, Tipperary, Waterford and Wexford?

If yes is the answer to both these questions,
click on this button to order cups:

[**Order Cups**](#)

Balancing Stress - A HSE Resource for sharing with PPNs

The HSE has developed a Free, easy-to-access online programme called 'Balancing Stress' to support people across Ireland in managing common mental health difficulties including stress, anxiety and low mood.

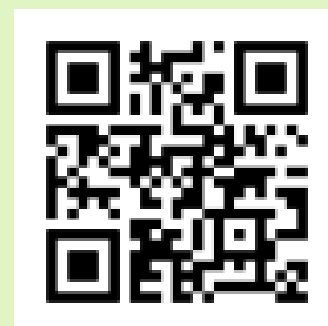
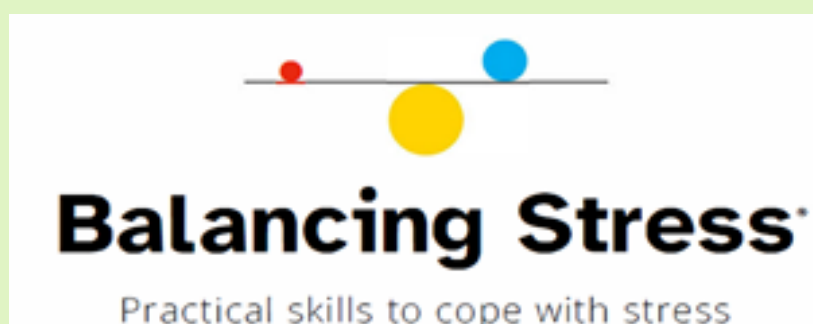
The HSE has developed a Free, easy-to-access online programme called 'Balancing Stress' to support people across Ireland in managing everyday mental difficulties such as stress, anxiety, low mood and worry.

The Balancing Stress programme offers six online video sessions (each around 35 minutes) covering key topics including managing stress, worry, anxiety, low mood, and relationship stress. This online programme offers people evidence-based tools to manage stress effectively and enhance their mental wellbeing.

The programme is delivered by Dr Niamh Clarke, HSE Principal Psychologist, and features expert interviews with Professor Alan Carr, UCD School of Clinical Psychology.

You can watch the videos at your own pace, on your own time, using a phone, tablet or laptop.

The easy to use QR code will take you directly to the programme. If you require further information, please do not hesitate to contact me at: yvonne.gilsenan@hse.ie



PPN Stakeholder Training

PPN Stakeholder Training

The online only self-paced training videos programme for PPN stakeholders has been developed with SJI.

Registrations for the online only training is now open.

Social Justice Ireland is providing this training on behalf of the Department.

The online only training covers the following:

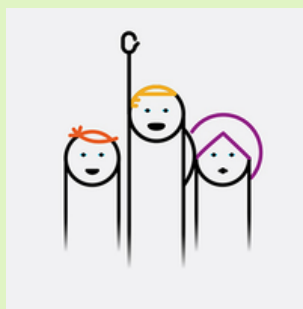
- An Introduction to the PPNs (2 Modules)
- Local Government Budgets
- PPNs and Local Government
- Effective Participation in Consultations
- Effective Facilitation
- Strategic Planning
- Measuring Outcomes and Impacts

This is online only and is intended for self-directed learning at the learner's own pace. Social Justice Ireland will provide some support via the webform on each Module page. There are no scheduled classes as part of this training.

To register, please complete the Registration Form at the following link: : [Register for Training_|_Social Justice Ireland](#)

PPN Limerick Documents

- The [PPN Website](#) has all our information and details regarding membership and groups, linkage groups and documentation.
- The [PPN Constitution](#) details how we operate:
- Our [Strategic Plan](#) outlines our goals for the next 5 years:
- Our [2026 Workplan](#) was agreed by the Plenary at our AGM on the 26th of November 2025.
- The [PPN Handbook](#) is the national document which guides the processes that all PPN's Nationally must follow.
- Training slides from recent Induction training for SPC Members can be viewed [HERE](#). They include background information that may be of interest.



MAYORAL PROGRAMME

Mayor of Limerick, John Moran, has unveiled an ambitious vision for the future of Limerick City and County with the publication of the Limerick Mayoral Programme 2024-2029, titled More for Limerick. This comprehensive 138-page document outlines the Mayor's vision and objectives for his term in office, as mandated by the Local Government (Mayor of Limerick) and Miscellaneous Provisions Act 2024.

[Mayoral Programme, More for Limerick, 2024-2029](#)

