



# Public Participation Network Limerick

## About PPN Limerick

PPN Limerick is a network of community, voluntary, social inclusion and environmental groups/organisations, working together for a better Limerick through public participation in local democratic structures. Visit [our website](#) for more information

## PPN Membership

Now stands at 300 members.

PPN Limerick membership continues to grow and you can check out all our members [on the Membership directory](#) on the PPN Limerick website.

Register to join [HERE](#)

## In this Newsletter

- PPN Update/ Survey
- LEADER 2023 - 2027 Funding Information Clinics
- Pride of Place open for EOI's
- PPN Limerick Life long learning event
- Training and Consultation opportunities

## PPN Limerick Updates

We have set our Plenary Meeting dates for 2026, as well as the Secretariat Meetings.

you can view these [HERE](#).

Any member can submit a motion or item for discussion before these Meetings by emailing [ppn@limerick.ie](mailto:ppn@limerick.ie).

### [PPN Limerick Survey Link](#)

Please complete this survey to make the Secretariat aware of any issues or opinions you have regarding our engagement with the council/ Committees in advance of us signing our MOU.

### **Regarding Appointment of ratified PPN Representatives to Committees**

As members will be aware at the full council meeting on the 30<sup>th</sup> of March the appointment of our representatives was deferred for the second time. There was a question regarding geographical representation of representatives.

As per the updates we are organising a meeting with our liaison and the Director of Services for the community department PPN Limerick is attached to.

We have communicated with Corporate who will issue correspondance and outcomes from as soon as the draft minutes from the meeting are completed.

We will then coordinate a response with input from all involved and proceed with engaging with the councillors, corporate and the committees affected to ensure that this is resolved.

# PUBLIC PARTICIPATION NETWORKS : PARTICIPATIVE DEMOCRACY IN ACTION

THURSDAY

23<sup>rd</sup>

APRIL  
2026

4-5PM

JOIN US AT **LIMERICK CITY LIBRARY,**  
**BARROW HOUSE, V94 RF63** FOR A  
DISCUSSION ABOUT THE PRINCIPLES OF  
PARTICIPATIVE DEMOCRACY, A SYSTEM  
WHICH ENCOURAGES THE DIRECT, ACTIVE  
INVOLVEMENT OF CITIZENS IN POLITICAL  
DECISION-MAKING AND THE PUBLIC  
PARTICIPATION NETWORK.

PPN'S ARE IRELAND'S PRIMARY FRAMEWORK  
FOR PARTICIPATORY DEMOCRACY,  
ENABLING OVER 21,000 COMMUNITY,  
VOLUNTARY, SOCIAL INCLUSION, AND  
ENVIRONMENTAL GROUPS NATIONALLY TO  
DIRECTLY INFLUENCE LOCAL POLICY.

COME ALONG TO LEARN MORE AND SEE  
HOW YOU COULD BECOME MORE INVOLVED



Scan the code to register or contact  
[ppn@limerick.ie](mailto:ppn@limerick.ie)  
(061) 556347



## Walking Buddies Limerick- Community Walking Initiative Bringing People Together Across Limerick



Walking Buddies Limerick is a local volunteer-led walking group that has been bringing people together across Limerick for the past number of years through free weekly walks and social connection.

Walking Buddies welcomes men and women of all ages and fitness levels from across the city and surrounding areas.

Every Thursday at 7.30 pm, they meet outside Collins Bar, Dooradoyle, for a relaxed 5–6km walk, creating a welcoming social space for both regular members and newcomers.

The group has become an important support network for many participants, promoting both physical well-being and social connection in the community. In addition to the weekly walks, they also organise longer weekend hikes throughout the year.

These walks are free of charge and designed to encourage people of all abilities to get active, meet others and enjoy the benefits of walking in a supportive group environment. Local fitness and wellbeing partners are also contributing short demonstrations and guidance during the walks.

Click below to learn more and to register for events:

<https://walkingbuddieslimerick.wordpress.com/>

## LGBTIQ+ Funding Open Call 2026

### Scheme A: Supporting LGBTIQ+ Community Organisations in the Delivery of Services and Initiatives

The overall aim of this fund is to promote inclusion, protect rights and to improve quality of life and wellbeing for members of the LGBTIQ+ community enabling them to participate fully in Ireland's social, economic, cultural, and political life. The Department of Children, Disability and Equality is providing funding of €1,500,000 for Schemes A (delivery of services and initiatives) & B (grant scheme).

### Application details for the LGBTIQ+ Community Services Fund

There are two streams of funding under the LGBTIQ+ Community Services Fund

1. Scheme A is open to applications from existing LGBTIQ+ NGOs and community organisations working with the LGBTIQ+ community to support new initiatives and to maintain and enhance existing services and initiatives.
1. Scheme B will provide small grants to organisations for projects that promote visibility and inclusion of LGBTIQ+ persons.

All applications must be submitted electronically.

Applications for funding will remain open until 12pm on Thursday, 30 April 2026. Groups can access a detailed guidance document and complete an online application form at the following links:

Scheme A –

<https://ec.europa.eu/eusurvey/runner/Scheme-A>

Scheme B –

<https://ec.europa.eu/eusurvey/runner/Scheme-B>

## IPB Pride of Place Competition 2026 open for EOI's

Limerick City and County Council is pleased to invite Expressions of Interest from community groups, voluntary organisations, and local initiatives wishing to be considered for nomination to the IPB Pride of Place Competition 2026.

Pride of Place is a prestigious, all island competition that recognises and celebrates the vital contribution made by community groups to local society. It highlights the dedication, commitment, and impact of volunteers working to enhance the quality of life in their areas.

Submissions are welcome from groups who:

- Demonstrate strong community spirit and volunteerism
- Show evidence of inclusive and meaningful community engagement
- Deliver positive social, environmental, or cultural impact
- Are committed to long term, sustainable community development

You will find more information [HERE](#)

### **How to Apply:**

Please send your Expression of Interest Form by email to [prideofplace@limerick.ie](mailto:prideofplace@limerick.ie)

**Closing date: 24th April 2026**

LEADER 2023 - 2027

# Funding Information Clinics



Come and meet with a LEADER Development Officer to discuss your project ideas in relation to enterprise, community or environmental projects while we are in your local area.

## Foynes

## Dooradoyle

## Dromcollogher

**Date:** March 15th

**Date:** March 15th

**Date:** April 13th

**Time:** 7.00pm - 9.00pm

**Time:** 10.00am - 1.00pm

**Time:** 2.00 - 4.00pm

**Venue:** Foynes  
Community Centre

**Venue:** Dooradoyle  
Council Offices

**Venue:** Dromcollogher  
Community Centre

**Clinics are open to drop-ins, however, booking is recommended.  
For further information and to book your place, email [soshea@wlr.ie](mailto:soshea@wlr.ie)  
or call 087 0957653**



Rialtas  
na hÉireann  
Government  
of Ireland

Tionscadal Éireann  
Project Ireland  
2040

Ár dTodhchaí  
Tuaithe  
Our Rural  
Future



Arna chomhchistiú ag  
an Aontas Eorpach  
Co-funded by  
the European Union



Comhairle Cathrach  
& Contae Luimnigh  
Limerick City  
& County Council



Forbairt Iarthar Luimní  
West Limerick Resources

## More LEADER Workshops

# LEADER 2023 TO 2027 Application Clinics



**Are you a community group, small business or social enterprise?**

With the LEADER 2023-2027 Programme NOW OPEN to new applications, come and meet with a member of our LEADER team to discuss your project ideas and grant aid while we are in your area.

**9**

APRIL

**KILMALLOCK**

10.30AM TO 3.30PM

KILMALLOCK AREA COUNCIL OFFICE (V35 K497)

**16**

APRIL

**CAHERCONLISH**

4.00PM TO 7.00PM

CAHERCONLISH MILLENNIUM CENTRE (V94 CC60)

**22**

APRIL

**KILFINANE**

6.00PM TO 8.00PM

TEACH NA CILLE (V35 KW01)

Due to limited times, please contact one of our LEADER Development Officers to book



**Katie Murray**  
kmurray@wlr.ie  
087 357 1310

**Aimee Grigg**  
agrigg@wlr.ie  
087 356 3880

## Conservation Advice Grant Scheme for Traditional Houses Open for Applications

The Conservation Advice Grant Scheme is a funding scheme to provide grants for expert conservation advice to support the refurbishment of properties under two streams.

### Stream 1

Stream 1 of the scheme is open to owners of traditional houses in villages, towns, and cities where the building is a Protected Structure and/or an historic structure within an Architectural Conservation Area.

Buildings previously used for commercial purposes also qualify for the scheme where the intended use is as a single dwelling or a single/multiple dwelling above the shop.

### Stream 2

Stream 2 of the scheme is open to owners of Traditional Farmhouses where the building is a Protected Structure and/or an historic farmhouse located within an Architectural Conservation Area and/or a vernacular farmhouse which has no statutory protection.

The Conservation Advice Grant Scheme provides grants to cover 67% of the costs (up to a maximum grant of €5,000) of having a conservation expert with proven and appropriate expertise:

For more information on the Scheme click [HERE](#)

The closing date for receipt of completed applications is  
**Friday, 8th May at 5pm.**

Any queries should be directed to [conservationadvicegrants@housing.gov.ie](mailto:conservationadvicegrants@housing.gov.ie)

# Call for Expressions of Interest – Community Space, Limerick Opportunity

MS Ireland is inviting expressions of interest from community, voluntary, and charitable organisations in Limerick City that are **seeking space for their services.**

## About the Building

Located at Springfield, Singland Road (V94 P237), this 10,500 sq. ft. two-storey property (purchased June 2024 with support from the JP McManus Pro-Am Fund) is currently under development. The ground floor will house MS Ireland services, with completion expected by September 2026.

## Available Space

Second floor: approx. 3,790 sq. ft.

Shell and core (fit-out flexible to tenant needs)

Accessible (stairs; lift can be installed)

## Who It's For

Organisations aligned with MS Ireland's mission, particularly in health, disability, and community support.

## Next Steps

Early engagement is encouraged to shape the space. Get in touch to express interest or discuss options. **Please contact**

**Mary McCusker, 086 144 8767 or email: marym@ms-society.ie.**



Women's  
Collective  
Ireland  
Limerick

## Community workers' insights survey

**This survey seeks to gather the perspectives of community workers on women's participation, equality, and community infrastructure in the Limerick region and surrounding areas.**

**We are particularly interested in your insights on women's participation in local decision-making, the availability and accessibility of women-centred community spaces, barriers to equality and inclusion, and how broader societal dynamics are experienced at community level.**



Thank you for sharing  
your views

[www.womenscollective.ie/wci-limerick](http://www.womenscollective.ie/wci-limerick)

## Limerick City and County Council Secures Designation of The People's Park as a "Quiet Area"



Limerick City and County Council Secures Designation of The People's Park as a "Quiet Area"

First "Quiet Area" outside of Dublin

Limerick City and County Council (LCCC) has successfully secured the designation of the People's Park as a "Quiet Area," following consultation with the Environmental Protection Agency (EPA) and approval by the Minister for the Department of Climate, Energy and the Environment, Darragh O'Brien TD, under the Environmental Noise Regulations 2018.

The designation formally recognises the park's tranquil sound environment. While it does not impose noise limits or restrict activities, the designation acknowledges that the quality of sound within the People's Park is significantly more pleasant than in the surrounding busier urban areas. The park's soundscape is largely characterised by natural sounds, contributing to its peaceful and restorative atmosphere.

## Training

# Hospital Family Resource Centre in partnership with PPN Limerick

**Manual Handling  
Training for  
Community Groups**  
Monday 13<sup>th</sup> April 2026  
9.30 a.m. to 11.30 .am.

At Hospital FRC  
Eircode V35 RP26



**Public Participation  
Network Limerick**

**To book a place contact**

**Martha Potter**

**087 2813341**



## Sport Ireland Diversify the Volunteer Base Survey

**Diversify the Volunteer Base in Sport Insights Report** is now underway. S3 Solutions are delighted to have been appointed by Sport Ireland to undertake this important research study, which aims to broaden the volunteer base.

The input of individuals (both volunteering and non-volunteering) from across the country is vital to inform the development of this research, which will directly influence practice within the sports sector at a local, regional and national level. We would deeply appreciate your assistance in raising awareness of the digital survey across your network of volunteers and any stakeholder organisations within your network who serve the needs of underrepresented groups, such as Women, People with Disabilities, Ethnic Minorities, LGBTQI+, Traveller/Roma Communities, Youth, and Older People.

We are really keen to see the views of those currently volunteering and those who face barriers to volunteering reflected in the report recommendations.

This survey will provide us with insights into the experience of volunteers and non-volunteers as well as underrepresented groups which improve our understanding of the barriers to participation and the value gained from participation in volunteering also. It will take approximately 8 minutes to complete. **The survey can be accessed via the following link and will close on Monday 13th April 2026 at 5pm.**

<https://app.voiceform.com/to/4cVPosigareRuir9>

## Migrant Integration Strategy Survey

**Limerick City are developing a strategy for Limerick City Council are developing their Migrant Integration Strategy and we are working with local community groups to hear from them on how Limerick can be more inclusive to migrants**

- 1) Stakeholder survey - those working with migrants [HERE](#)**
- 2) Community survey - migrant community themselves [HERE](#)**

# Limerick butterfly monitoring training and support All Ireland Surveys

**Butterfly Monitoring Training** - Saturday 18th April - half day –

- Registration Link
- [Butterfly Monitoring Training Tickets, Saturday, Apr 18, 2026 from 10 am to 1 pm | Eventbrite](#)

## Agenda

10.10 - 10.15 - Welcome, Sinead Mc Donnell, Limerick City and County Council Biodiversity Officer

10.15 - 11.15 - Indoor butterfly ID introduction to transect, Dr Liam Lysaght, CEO of the National Biodiversity Data Centre

11.15 - 11.30 - Teas and Coffees

11.30 - 13:00 - Outdoor monitoring session led by Dr Liam Lysaght

## Venues

Indoor: Exhibition Room, Library Dooradoyle, Limerick (beside crescent shop centre) - [here](#)

Outdoor: Baggot Estate - [here](#)

## Support the All-Ireland Surveys

- **“All-Ireland Squirrel and Pine Marten Survey”** and help track the Red Squirrel, the Grey Squirrel and Pine Martens. Members of the public are invited to record their sightings of the three species throughout 2026, helping researchers build a detailed picture of how their populations are changing. The 2026 survey is being delivered with the support of the National Biodiversity Data Centre in the Republic of Ireland and CEDaR in Northern Ireland. Sightings of all three mammals can be recorded on the online survey form [www.biodiversityireland.ie](http://www.biodiversityireland.ie). The survey is part of a long-running monitoring programme, with previous surveys carried out on four occasions since 1997, providing vital insights into long-term trends and conservation success.
- **“Hop To It”**, Frog Survey - While frogspawn season has largely passed, this is the ideal time to spot tadpoles, froglets and adult frogs, all of which are vital to understanding the health of our local frog populations. noting that even one tadpole or froglet record can help fill data gaps. Sightings can be submitted to: IPCC: [www.ipcc.ie](http://www.ipcc.ie), the National Biodiversity Data Centre: [records.biodiversityireland.ie](http://records.biodiversityireland.ie) or email [sinead.mcdonnell@limerick.ie](mailto:sinead.mcdonnell@limerick.ie) with stage of life, numbers, location, (eg ditch, pond, puddle..) and general address (eg Newcastle West)

## All of the above:

- Engage with the following SDGs – Climate Action - 13, Life on Land -15 and Partnership for the Goals -17, and are
- Relevant to the 2026 Tidy Towns Application under the category - Nature and Biodiversity in Your Locality

## “Hop To It” and Help Track Local Frogs



Although well known, the common frog (*Rana temporaria*) is Ireland’s only native frog species and is listed as vulnerable across Europe. Frogs are considered important biological indicators because their skin is highly sensitive to pollution. Their presence or absence can reveal much about water quality and local environmental conditions. They are protected under both the EU Habitats Directive and the Irish Wildlife Act. Why not participate in the “Hop It” nationwide survey and report your sightings of frog spawn, tadpoles, froglets or adult frogs. These simple records play a crucial role in monitoring frog populations and understanding the health of the environments they depend on.

### How to Take Part

If you spot frog spawn, tadpoles, froglets or adult frogs in your garden, local green space or while out walking, you can submit records directly to the IPCC at:

- [www.ipcc.ie](http://www.ipcc.ie)
- Email [bogs@ipcc.ie](mailto:bogs@ipcc.ie)
- Phone 045 860133

Records can also be submitted to the National Biodiversity Data Centre at <https://records.biodiversityireland.ie/start-recording>.

Further Details on [Limerick City and County Council Encourages Public to “Hop To It” and Help Track Local Frogs | Limerick.ie](#)

## Trees.limerick.ie website to record newly planted trees across Limerick

Limerick City and County Council has created [Trees.limerick.ie](https://trees.limerick.ie) website to record newly planted trees across Limerick City and County.

Any individual, community group or business can now register any new tree planted.

This will enable to track the progress and count of trees planted in Limerick City and County.

[Trees.limerick.ie](https://trees.limerick.ie) is supported by the Mayor of Limerick, John Moran who is seeking to reach a target of at least one tree to be planted by every citizen in Limerick.

The link is <https://trees.limerick.ie/> and below is the QR code:



## Public consultation on the new Healthy Ireland Framework



The Department of Health is currently undertaking a public consultation on the new Healthy Ireland Framework.

They are inviting organisations and their networks to share their views and help shape the future direction of health and wellbeing policy in Ireland.

The consultation is open until **22nd of April** and submissions can be made online via the QR Code above or at the following link:

[HERE](#)



# Grow

## Mental Health

### WHO WE ARE:

We are a community of people drawn together by our first-hand experiences of mental health problems. Having found practical ways of helping each other recover from mental health challenges we developed what we refer to as The Grow Program. We meet weekly in locations all over Ireland and use our proven [12 Step Program](#) to recover from various forms of mental health problems.



***For Adults 18+***  
***33 Henry Street, Limerick***

**Come along and hear Who Grow is, What we do and how you can receive support for your Mental Health.**

**Contact Celia 086 1526966 or [celiabrett@grow.ie](mailto:celiabrett@grow.ie) for further information.**

## Limerick Walking Guide



With the weather (occasionally) improving you can find routes and maps of the many fantastic walking/ running trails in Limerick City and County [HERE](#)

## Circular Cups for Community Events in the Southern Region



Elevate your small scale event and festival by choosing to rent reusable cups. You will make a big difference to the environment by preventing waste and reducing litter.

Organisers of small scale events and festivals can now avail of beautifully designed robust, pint, half pint and hot beverage cups with or without lids at a reasonable cost.

More Information can be found [HERE](#)

### Want to rent cups?

Here's a checklist:

1. Is your event or festival small-scale & not for profit?
2. Is your event/festival happening in Carlow, Clare, Cork City, Cork County, Kerry, Kilkenny, Limerick, Tipperary, Waterford and Wexford?

If yes is the answer to both these questions,  
click on this button to order cups:

[Order Cups](#)

## Balancing Stress - A HSE Resource for sharing with PPNs

The HSE has developed a Free, easy-to-access online programme called 'Balancing Stress' to support people across Ireland in managing common mental health difficulties including stress, anxiety and low mood.

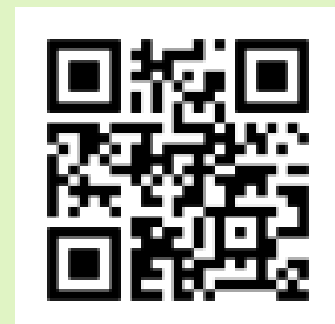
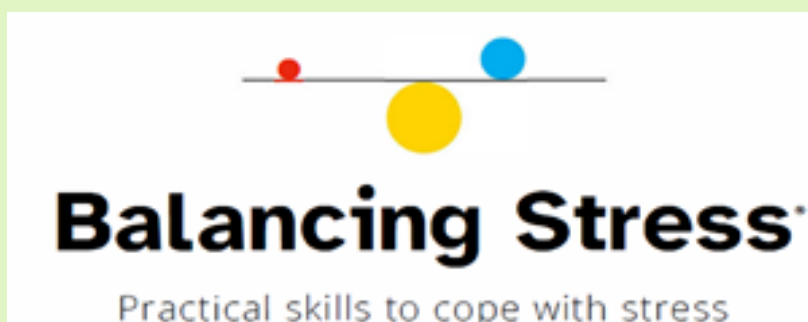
The HSE has developed a Free, easy-to-access online programme called 'Balancing Stress' to support people across Ireland in managing everyday mental difficulties such as stress, anxiety, low mood and worry.

The Balancing Stress programme offers six online video sessions (each around 35 minutes) covering key topics including managing stress, worry, anxiety, low mood, and relationship stress. This online programme offers people evidence-based tools to manage stress effectively and enhance their mental wellbeing.

The programme is delivered by Dr Niamh Clarke, HSE Principal Psychologist, and features expert interviews with Professor Alan Carr, UCD School of Clinical Psychology.

You can watch the videos at your own pace, on your own time, using a phone, tablet or laptop.

The easy to use QR code will take you directly to the programme. If you require further information, please do not hesitate to contact me at: [yvonne.gilsenan@hse.ie](mailto:yvonne.gilsenan@hse.ie)



## PPN Stakeholder Training

### PPN Stakeholder Training

The online only self-paced training videos programme for PPN stakeholders has been developed with SJI.

Registrations for the online only training is now open.

Social Justice Ireland is providing this training on behalf of the Department.

The online only training covers the following:

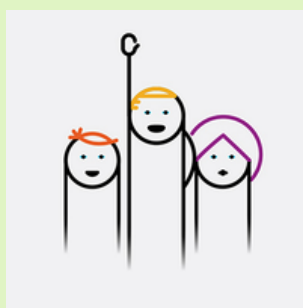
- An Introduction to the PPNs (2 Modules)
- Local Government Budgets
- PPNs and Local Government
- Effective Participation in Consultations
- Effective Facilitation
- Strategic Planning
- Measuring Outcomes and Impacts

This is online only and is intended for self-directed learning at the learner's own pace. Social Justice Ireland will provide some support via the webform on each Module page. There are no scheduled classes as part of this training.

To register, please complete the Registration Form at the following link: : [Register for Training\\_|\\_Social Justice Ireland](#)

## PPN Limerick Documents

- The [PPN Website](#) has all our information and details regarding membership and groups, linkage groups and documentation.
- The [PPN Constitution](#) details how we operate:
- Our [Strategic Plan](#) outlines our goals for the next 5 years:
- Our [2026 Workplan](#) was agreed by the Plenary at our AGM on the 26<sup>th</sup> of November 2025.
- The [PPN Handbook](#) is the national document which guides the processes that all PPN's Nationally must follow.
- Training slides from recent Induction training for SPC Members can be viewed [HERE](#). They include background information that may be of interest.



## MAYORAL PROGRAMME

Mayor of Limerick, John Moran, has unveiled an ambitious vision for the future of Limerick City and County with the publication of the Limerick Mayoral Programme 2024-2029, titled More for Limerick. This comprehensive 138-page document outlines the Mayor's vision and objectives for his term in office, as mandated by the Local Government (Mayor of Limerick) and Miscellaneous Provisions Act 2024.

### [Mayoral Programme, More for Limerick, 2024-2029](#)

