



# Public Participation Network Limerick

## About PPN Limerick

PPN Limerick is a network of community, voluntary, social inclusion and environmental groups/organisations, working together for a better Limerick through public participation in local democratic structures. Visit [our website](#) for more information

## PPN Membership

Now stands at 303 members.

PPN

Limerick

membership continues to grow and you can check out all our members [on the Membership directory](#) on the PPN Limerick website.

Register to join [HERE](#)

## In this Newsletter

- Register for upcoming Plenary Meeting
- Clar Funding 2026 OPEN Information Clinics available
- Pride of Place open for EOI's
- Invitation to attend consultation re: location of off shore windfarms
- Training and Consultation opportunities


## PPN Limerick Updates

Please note the change in Plenary Date to the 14<sup>th</sup> of May. This has been adjusted to update the Plenary and discuss options before the May full Council Meeting.

Agenda and documentation to follow

Register to attend [HERE](#)

Please note if you will be attending online or inperson.



The poster features the PPN Limerick logo at the top left, consisting of three overlapping circles in pink, blue, and green. To the right is a speech bubble icon containing three stylized human figures. The main title 'PPN Limerick Plenary Meeting' is in blue. Below it, the date and time 'Thursday, May 14th 2026 from 6:30 - 8.30pm' and location 'at Council Chambers, Dooradoyle, Limerick.' are in pink. Two icons of three stylized human figures are placed on either side of the date and location text. A note '\*Registration via eventbrite link\*' is in orange. At the bottom, there are four logos: PPN Limerick, Social Inclusion (a blue link icon), Community and Voluntary (three stylized human figures), and Environmental (two green leaves).

Public Participation Network Limerick

PPN Limerick Plenary Meeting

Thursday, May 14th 2026 from 6:30 - 8.30pm  
at  
Council Chambers, Dooradoyle, Limerick.

\*Registration via eventbrite link\*

Public Participator Network Limerick

Social Inclusion

Community and Voluntary

Environmental

We have set our Plenary Meeting dates for 2026, as well as the Secretariat Meetings.

you can view these [HERE](#).

Any member can submit a motion or item for discussion before these Meetings

by emailing [ppn@limerick.ie](mailto:ppn@limerick.ie).

## 2026 Community Safety Fund

€4.75 million available for community safety improvement projects nationwide

Applications will be open from **13 April until 5pm on 18 May 2026**.

The Community Safety Fund is managed by the National Office of Community Safety, an office of the Department of Justice, Home Affairs and Migration.

Grants range between €20,000 – €150,000.

Applications are invited from community safety initiatives as well as groups co-funded with local authorities, NGOs and community organisations working on issues relevant to community safety and youth justice.

Applications may be submitted by individual organisations, or by a consortium involving two or more organisations where the lead partner is a community organisation, not-for-profit, social enterprise or similar with a remit relevant to community safety and/or youth justice.

Applications with innovative approaches will be afforded particular consideration.

Completed application forms must be returned by 5pm on 18 May 2026 to [CommunitySafetyFund@justice.ie](mailto:CommunitySafetyFund@justice.ie)

More information on Community Safety can be found at: [www.gov.ie/communitysafety](http://www.gov.ie/communitysafety).

Supporting documentation, including the Application Form and Guidance Document are available at link below. Information on the previous allocation from last year's Fund, by successful project and county, may also be found at the link [HERE](#)

## TICKETS TO GO ON SALE FOR THE 2027 RYDER CUP



- **Exclusive window for island of Ireland residents opens on Friday April 24**
  - Ticket ballot for the rest of the world opens on Wednesday June 3
  - Ticket access for Tuesday practice as part of 'SuperValu Community Day'
- Ryder Cup Europe today announced details of how fans can buy tickets for the 2027 Ryder Cup at Adare Manor in Ireland.

At 11am (BST) this Friday (April 24) a limited number of general admission daily tickets will go on sale to residents of the island of Ireland for the three match days - Friday September 17, Saturday September 18 and Sunday September 19 – at a cost of €499 per daily ticket.

Only residents from the island of Ireland with a registered Ryder Cup ticket account will be able to access this exclusive ticket window. To register, click [here](#).

## INVITATION National DMAP for ORE Consultation Event

### INVITATION National DMAP for ORE Consultation Event

**DATE: Thursday 30th April 2026**

**VENUE: Student Life Centre, University of Limerick ,  
Castletroy, Co. Limerick, V94 XE84**

**TIME: 11.00 AM-12.30 PM**

On September 12th 2025, Ministers O'Brien and Dooley announced the publication of the National Designated Maritime Area Plan (DMAP) for Offshore Renewable Energy (ORE) Proposal and accompanying Public Participation Statement (PPS). This announcement formally commenced the preparation of the National DMAP for ORE, the aim of which is to

**designate sites in Ireland's maritime area capable of delivering at least 15GW of Offshore Renewable Energy, to be in development by 2040.**

The delivery of this plan is key priority for Government and will require a whole of Government approach to be delivered in the required timeframe (end 2027). The Marine Strategic Policy and Marine Environment and Planning sections in the Department of Climate, Energy and the Environment (DCEE) are leading the National DMAP development, and work is underway on the mapping of ORE opportunity areas to identify sites that may be considered potentially feasible for ORE.

The National DMAP team, would like to invite a representative from your organisation to attend a regional consultation and engagement event on the National DMAP for ORE, and a presentation from the National DMAP for ORE project team on the work carried out to date and we very much welcome your input on the DMAP development process and the datasets.

The event for your region has been scheduled for 11.00 AM to 12.30 PM on Thursday 30th April 2026, at Student Life Centre, University of Limerick , Castletroy, Co. Limerick, V94 XE84.

**Please RSVP to [brianfitzgeraldclo@outlook.com](mailto:brianfitzgeraldclo@outlook.com) by Monday 27th April 2026**

to secure your place. If you cannot attend at these times, please advise Brian FitzGerald, who will seek to follow-up with you.

## Funding Opportunity Alert – CLÁR 2026 is NOW OPEN!

**Community groups across County Limerick CLÁR areas can apply for funding to develop, upgrade and enhance local facilities.**

Limerick City and County Council will be available to answer any questions that community groups may have about the CLÁR 2026 scheme at drop-in information clinics across the County.

<b>Rathkeale</b>	Rathkeale Community Centre, The Square, Rathkeale. V94V6R6	Tuesday	28th April 2026	5.30pm to 7pm
<b>Newcastle West</b>	Limerick City and County Council, Newcastle West District Office, Áras William Smith O' Brien, <u>Gortboy</u> , Newcastle West V42EH73	Wednesday	29th April 2026	5.30pm to 7pm
<b>Cappamore</b>	Cappamore Community Centre, Cappamore V94WK07	Thursday	30th April 2026	5.30pm to 7pm

Further information, map and link to the Expression of Interest form is available via this [LINK](#).

Completed online Expression of Interest forms with supporting documentation must be submitted online no later than Friday 22nd May 2026.

Please direct any enquiries to the Rural Development Department on 061-556008 or by email to [CLAR@limerick.ie](mailto:CLAR@limerick.ie)

## LGBTIQ+ Funding Open Call 2026

### Scheme A: Supporting LGBTIQ+ Community Organisations in the Delivery of Services and Initiatives

The overall aim of this fund is to promote inclusion, protect rights and to improve quality of life and wellbeing for members of the LGBTIQ+ community enabling them to participate fully in Ireland's social, economic, cultural, and political life. The Department of Children, Disability and Equality is providing funding of €1,500,000 for Schemes A (delivery of services and initiatives) & B (grant scheme).

### Application details for the LGBTIQ+ Community Services Fund

There are two streams of funding under the LGBTIQ+ Community Services Fund

1. Scheme A is open to applications from existing LGBTIQ+ NGOs and community organisations working with the LGBTIQ+ community to support new initiatives and to maintain and enhance existing services and initiatives.
1. Scheme B will provide small grants to organisations for projects that promote visibility and inclusion of LGBTIQ+ persons.

All applications must be submitted electronically.

Applications for funding will remain open until 12pm on Thursday, 30 April 2026. Groups can access a detailed guidance document and complete an online application form at the following links:

Scheme A –

<https://ec.europa.eu/eusurvey/runner/Scheme-A>

Scheme B –

<https://ec.europa.eu/eusurvey/runner/Scheme-B>

## Walking Buddies Limerick- Community Walking Initiative Bringing People Together Across Limerick



Walking Buddies Limerick is a local volunteer-led walking group that has been bringing people together across Limerick for the past number of years through free weekly walks and social connection.

Walking Buddies welcomes men and women of all ages and fitness levels from across the city and surrounding areas.

Every Thursday at 7.30 pm, they meet outside Collins Bar, Dooradoyle, for a relaxed 5–6km walk, creating a welcoming social space for both regular members and newcomers.

The group has become an important support network for many participants, promoting both physical well-being and social connection in the community. In addition to the weekly walks, they also organise longer weekend hikes throughout the year.

These walks are free of charge and designed to encourage people of all abilities to get active, meet others and enjoy the benefits of walking in a supportive group environment. Local fitness and wellbeing partners are also contributing short demonstrations and guidance during the walks.

Click below to learn more and to register for events:

<https://walkingbuddieslimerick.wordpress.com/>

## Conservation Advice Grant Scheme for Traditional Houses Open for Applications

The Conservation Advice Grant Scheme is a funding scheme to provide grants for expert conservation advice to support the refurbishment of properties under two streams.

### Stream 1

Stream 1 of the scheme is open to owners of traditional houses in villages, towns, and cities where the building is a Protected Structure and/or an historic structure within an Architectural Conservation Area.

Buildings previously used for commercial purposes also qualify for the scheme where the intended use is as a single dwelling or a single/multiple dwelling above the shop.

### Stream 2

Stream 2 of the scheme is open to owners of Traditional Farmhouses where the building is a Protected Structure and/or an historic farmhouse located within an Architectural Conservation Area and/or a vernacular farmhouse which has no statutory protection.

The Conservation Advice Grant Scheme provides grants to cover 67% of the costs (up to a maximum grant of €5,000) of having a conservation expert with proven and appropriate expertise:

For more information on the Scheme click [HERE](#)

The closing date for receipt of completed applications is  
**Friday, 8th May at 5pm.**

Any queries should be directed to [conservationadvicegrants@housing.gov.ie](mailto:conservationadvicegrants@housing.gov.ie)

# Call for Expressions of Interest – Community Space, Limerick Opportunity

MS Ireland is inviting expressions of interest from community, voluntary, and charitable organisations in Limerick City that are **seeking space for their services.**

## About the Building

Located at Springfield, Singland Road (V94 P237), this 10,500 sq. ft. two-storey property (purchased June 2024 with support from the JP McManus Pro-Am Fund) is currently under development. The ground floor will house MS Ireland services, with completion expected by September 2026.

## Available Space

Second floor: approx. 3,790 sq. ft.

Shell and core (fit-out flexible to tenant needs)

Accessible (stairs; lift can be installed)

## Who It's For

Organisations aligned with MS Ireland's mission, particularly in health, disability, and community support.

## Next Steps

Early engagement is encouraged to shape the space. Get in touch to express interest or discuss options. **Please contact**

**Mary McCusker, 086 144 8767 or email: marym@ms-society.ie.**



Women's  
Collective  
Ireland  
Limerick

## Community workers' insights survey

**This survey seeks to gather the perspectives of community workers on women's participation, equality, and community infrastructure in the Limerick region and surrounding areas.**

**We are particularly interested in your insights on women's participation in local decision-making, the availability and accessibility of women-centred community spaces, barriers to equality and inclusion, and how broader societal dynamics are experienced at community level.**



Thank you for sharing  
your views

[www.womenscollective.ie/wci-limerick](http://www.womenscollective.ie/wci-limerick)

## Limerick City and County Council Secures Designation of The People's Park as a "Quiet Area"



Limerick City and County Council Secures Designation of The People's Park as a "Quiet Area"

First "Quiet Area" outside of Dublin

Limerick City and County Council (LCCC) has successfully secured the designation of the People's Park as a "Quiet Area," following consultation with the Environmental Protection Agency (EPA) and approval by the Minister for the Department of Climate, Energy and the Environment, Darragh O'Brien TD, under the Environmental Noise Regulations 2018.

The designation formally recognises the park's tranquil sound environment. While it does not impose noise limits or restrict activities, the designation acknowledges that the quality of sound within the People's Park is significantly more pleasant than in the surrounding busier urban areas. The park's soundscape is largely characterised by natural sounds, contributing to its peaceful and restorative atmosphere.

# Training



## Migrant Integration Strategy Survey

Limerick City are developing a strategy for Limerick City Council are developing their Migrant Integration Strategy and we are working with local community groups to hear from them on how Limerick can be more inclusive to migrants

- 1) Stakeholder survey - those working with migrants [HERE](#)
- 2) Community survey - migrant community themselves [HERE](#)



## “Hop To It” and Help Track Local Frogs



Although well known, the common frog (*Rana temporaria*) is Ireland's only native frog species and is listed as vulnerable across Europe. Frogs are considered important biological indicators because their skin is highly sensitive to pollution. Their presence or absence can reveal much about water quality and local environmental conditions. They are protected under both the EU Habitats Directive and the Irish Wildlife Act. Why not participate in the “Hop It” nationwide survey and report your sightings of frog spawn, tadpoles, froglets or adult frogs. These simple records play a crucial role in monitoring frog populations and understanding the health of the environments they depend on.

### How to Take Part

If you spot frog spawn, tadpoles, froglets or adult frogs in your garden, local green space or while out walking, you can submit records directly to the IPCC at:

- [www.ipcc.ie](http://www.ipcc.ie)
- Email [bogs@ipcc.ie](mailto:bogs@ipcc.ie)
- Phone 045 860133

Records can also be submitted to the National Biodiversity Data Centre at <https://records.biodiversityireland.ie/start-recording>.

Further Details on [Limerick City and County Council Encourages Public to “Hop To It” and Help Track Local Frogs | Limerick.ie](#)

## Trees.limerick.ie website to record newly planted trees across Limerick

Limerick City and County Council has created [Trees.limerick.ie](https://trees.limerick.ie) website to record newly planted trees across Limerick City and County.

Any individual, community group or business can now register any new tree planted.

This will enable to track the progress and count of trees planted in Limerick City and County.

[Trees.limerick.ie](https://trees.limerick.ie) is supported by the Mayor of Limerick, John Moran who is seeking to reach a target of at least one tree to be planted by every citizen in Limerick.

The link is <https://trees.limerick.ie/> and below is the QR code:





# Grow

## Mental Health

### WHO WE ARE:

We are a community of people drawn together by our first-hand experiences of mental health problems. Having found practical ways of helping each other recover from mental health challenges we developed what we refer to as The Grow Program. We meet weekly in locations all over Ireland and use our proven [12 Step Program](#) to recover from various forms of mental health problems.



***For Adults 18+***  
***33 Henry Street, Limerick***

**Come along and hear Who Grow is, What we do and how you can receive support for your Mental Health.**

**Contact Celia 086 1526966 or [celiabrett@grow.ie](mailto:celiabrett@grow.ie) for further information.**

## Limerick Walking Guide



With the weather (occasionally) improving you can find routes and maps of the many fantastic walking/ running trails in Limerick City and County [HERE](#)

## Circular Cups for Community Events in the Southern Region



Elevate your small scale event and festival by choosing to rent reusable cups. You will make a big difference to the environment by preventing waste and reducing litter.

Organisers of small scale events and festivals can now avail of beautifully designed robust, pint, half pint and hot beverage cups with or without lids at a reasonable cost.

More Information can be found [HERE](#)

### **Want to rent cups?**

Here's a checklist:

1. Is your event or festival small-scale & not for profit?
2. Is your event/festival happening in Carlow, Clare, Cork City, Cork County, Kerry, Kilkenny, Limerick, Tipperary, Waterford and Wexford?

If yes is the answer to both these questions,  
click on this button to order cups:

[\*\*Order Cups\*\*](#)

## Balancing Stress - A HSE Resource for sharing with PPNs

The HSE has developed a Free, easy-to-access online programme called 'Balancing Stress' to support people across Ireland in managing common mental health difficulties including stress, anxiety and low mood.

The HSE has developed a Free, easy-to-access online programme called 'Balancing Stress' to support people across Ireland in managing everyday mental difficulties such as stress, anxiety, low mood and worry.

The Balancing Stress programme offers six online video sessions (each around 35 minutes) covering key topics including managing stress, worry, anxiety, low mood, and relationship stress. This online programme offers people evidence-based tools to manage stress effectively and enhance their mental wellbeing.

The programme is delivered by Dr Niamh Clarke, HSE Principal Psychologist, and features expert interviews with Professor Alan Carr, UCD School of Clinical Psychology.

You can watch the videos at your own pace, on your own time, using a phone, tablet or laptop.

The easy to use QR code will take you directly to the programme. If you require further information, please do not hesitate to contact me at: [yvonne.gilsenan@hse.ie](mailto:yvonne.gilsenan@hse.ie)



## PPN Stakeholder Training

### PPN Stakeholder Training

The online only self-paced training videos programme for PPN stakeholders has been developed with SJI.

Registrations for the online only training is now open.

Social Justice Ireland is providing this training on behalf of the Department.

The online only training covers the following:

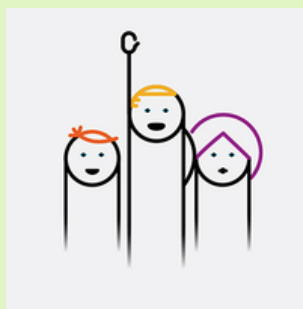
- An Introduction to the PPNs (2 Modules)
- Local Government Budgets
- PPNs and Local Government
- Effective Participation in Consultations
- Effective Facilitation
- Strategic Planning
- Measuring Outcomes and Impacts

This is online only and is intended for self-directed learning at the learner's own pace. Social Justice Ireland will provide some support via the webform on each Module page. There are no scheduled classes as part of this training.

To register, please complete the Registration Form at the following link: : [Register for Training\\_|\\_Social Justice Ireland](#)

## PPN Limerick Documents

- The [PPN Website](#) has all our information and details regarding membership and groups, linkage groups and documentation.
- The [PPN Constitution](#) details how we operate:
- Our [Strategic Plan](#) outlines our goals for the next 5 years:
- Our [2026 Workplan](#) was agreed by the Plenary at our AGM on the 26<sup>th</sup> of November 2025.
- The [PPN Handbook](#) is the national document which guides the processes that all PPN's Nationally must follow.
- Training slides from recent Induction training for SPC Members can be viewed [HERE](#). They include background information that may be of interest.



## MAYORAL PROGRAMME

Mayor of Limerick, John Moran, has unveiled an ambitious vision for the future of Limerick City and County with the publication of the Limerick Mayoral Programme 2024-2029, titled More for Limerick. This comprehensive 138-page document outlines the Mayor's vision and objectives for his term in office, as mandated by the Local Government (Mayor of Limerick) and Miscellaneous Provisions Act 2024.

### [Mayoral Programme, More for Limerick, 2024-2029](#)

