



Public Participation Network Limerick



About PPN Limerick

PPN Limerick is a network of community, voluntary, social inclusion and environmental groups/organisations, working together for a better Limerick through public participation in local democratic structures. Visit [our website](#) for more information

PPN Membership

Now stands at 303 members.

PPN

Limerick

membership continues to grow and you can check out all our members [on the Membership directory](#) on the PPN Limerick website.

Register to join

[HERE](#)

In this Newsletter

- Register for upcoming Plenary Meeting
- Riverfest Limerick 2026 – A Weekend Not to Miss!
- Pride of Place open for EOI's
- Invitation to attend consultation re: location of off shore windfarms
- Training and Consultation opportunities

PPN Limerick Updates

Please note the change in Plenary Date to the 14th of May. This has been adjusted to update the Plenary and discuss options before the May full Council Meeting.

Agenda and documentation to follow

Register to attend [HERE](#)

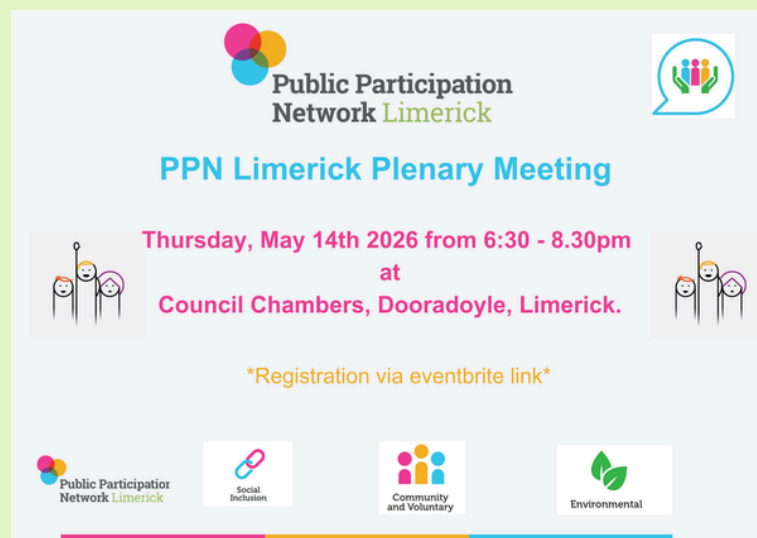
Please note if you will be attending online or in person.

Microsoft Teams meeting

Join: [https://teams.microsoft.com/meet/389198209060406?
p=m5pDv5TKZv5pl8mizR](https://teams.microsoft.com/meet/389198209060406?p=m5pDv5TKZv5pl8mizR)

Meeting ID: 389 198 209060 406

Passcode: UC7kH7w8



The flyer features the Public Participation Network Limerick logo at the top left, a speech bubble icon with three people at the top right, and a central title 'PPN Limerick Plenary Meeting'. Below the title, the date and time 'Thursday, May 14th 2026 from 6:30 - 8.30pm' are listed, followed by the location 'at Council Chambers, Dooradoyle, Limerick.' Two icons of three people are placed on either side of the location text. A note at the bottom center says '*Registration via eventbrite link*'. At the bottom, there are four logos: Public Participation Network Limerick, Social Inclusion, Community and Voluntary, and Environmental.

We have set our Plenary Meeting dates for 2026, as well as the Secretariat Meetings.

you can view these [HERE](#).

Any member can submit a motion or item for discussion before these Meetings

by emailing ppn@limerick.ie.

UL Citizen's Assembly



Comphárteachas OL
UL Engage



The UL Citizen's Assembly was held yesterday, the 30th of April. It was a fantastic event where the voting was difficult given the quality of the submissions from the UL teams. Thank you to all the members who attended.

The Winners were

- **The SMILE + Project:** Supporting Multilingual and Intercultural Learning in the Early Years
- **Givebackathon:** Students Solving Digital Challenges for Local Charities
- **SCOPE Project:** Student led Community Outreach for Pain Education

You can view the details of all the Projects submitted [HERE](#)

Riverfest Limerick 2026

Riverfest Limerick 2026 is taking place from Friday 1st May to Monday 4th May, and the city is gearing up for a fantastic weekend of celebration along the River Shannon.

This year's festival promises something for everyone, whether you're planning a family day out, looking to get active, or simply hoping to soak up the atmosphere with friends.

Friday 1st May:

- Riverfestival Village
- Explore Limerick: Stories, Streets & Heritage Walking Tour
- Fashionfest
- Limerick City Riverfest Music Trail
- Swim in the Shannon
- Fidget Feet

Saturday 2nd May:

- Hyrox at O'Brien's Park
- Great Limerick Run: Kids Fun Run
- Games in the Garden
- Swan in Love
- Riverfest Street Party
- A Whimsical Night with the Disco Pigs

Sunday 3rd May:

- Outdoor Bubble Walkabout
- Red Bull Dance Your Own Style Competition
- Regeneron Great Limerick Run
- Riverfest Spectacular Fireworks Display

Monday 4th May:

- The Irish Dance Playground
- Go Fly Your Kite
- Riverfest Family Fun Day at Limerick Milk Market

You can find the full programme and timings on www.limerick.ie/riverfest

Sustainability Step-Up Fund

Supporting social innovations across Ireland to step up their impact and address the climate crisis and its interconnected challenges

The Sustainability Step-Up Fund is a €1.5 million, two-year fund supported by Zurich in Ireland and the Department of Rural and Community Development and the Gaeltacht (DRCDG) via the Dormant Accounts fund.

The Sustainability Step-Up Fund supports social innovations across Ireland to step up their impact and address the climate crisis and its interconnected challenges. It is aimed at grassroots organisations, community-led initiatives, social enterprises and other non-profits that build resilience, promote sustainable practices, foster climate action and environmental stewardship and support the circular economy so that the benefits of the green transition are shared equitably. Both established organisations ready to scale and earlier-stage initiatives that are up and running and looking to step up are eligible to apply.

You can apply to the Sustainability Step-Up Fund via [this online portal](#) from Tuesday 21 April 2026 to Thursday 28 May 2026 at 1 PM.

Want more information? Join one of our application clinics on Thursday 7th May or Tuesday 19th May, at 10.00am.

These one-hour webinars will provide information on fund eligibility and the application process and offer an opportunity to answer any questions you have.

Register for an application clinic here:

Application Clinic 1 (Thursday, 7 May, 10.00am) – [Register here](#)

Application Clinic 2 (Tuesday, 19 May, 10.00am) – [Register here](#)

In the meantime, for any questions you may have contact

sustainabilityfund@rethinkireland.ie

2026 Community Safety Fund

€4.75 million available for community safety improvement projects nationwide

Applications will be open from **13 April until 5pm on 18 May 2026**.

The Community Safety Fund is managed by the National Office of Community Safety, an office of the Department of Justice, Home Affairs and Migration.

Grants range between €20,000 – €150,000.

Applications are invited from community safety initiatives as well as groups co-funded with local authorities, NGOs and community organisations working on issues relevant to community safety and youth justice.

Applications may be submitted by individual organisations, or by a consortium involving two or more organisations where the lead partner is a community organisation, not-for-profit, social enterprise or similar with a remit relevant to community safety and/or youth justice.

Applications with innovative approaches will be afforded particular consideration.

Completed application forms must be returned by 5pm on 18 May 2026 to CommunitySafetyFund@justice.ie

More information on Community Safety can be found at: www.gov.ie/communitysafety.

Supporting documentation, including the Application Form and Guidance Document are available at link below. Information on the previous allocation from last year's Fund, by successful project and county, may also be found at the link [HERE](#)

TICKETS TO GO ON SALE FOR THE 2027 RYDER CUP



- **Exclusive window for island of Ireland residents opens on Friday April 24**
 - Ticket ballot for the rest of the world opens on Wednesday June 3
 - Ticket access for Tuesday practice as part of 'SuperValu Community Day'
- Ryder Cup Europe today announced details of how fans can buy tickets for the 2027 Ryder Cup at Adare Manor in Ireland.

At 11am (BST) this Friday (April 24) a limited number of general admission daily tickets will go on sale to residents of the island of Ireland for the three match days - Friday September 17, Saturday September 18 and Sunday September 19 – at a cost of €499 per daily ticket.

Only residents from the island of Ireland with a registered Ryder Cup ticket account will be able to access this exclusive ticket window. To register, click [here](#).

Conservation Advice Grant Scheme for Traditional Houses Open for Applications

The Conservation Advice Grant Scheme is a funding scheme to provide grants for expert conservation advice to support the refurbishment of properties under two streams.

Stream 1

Stream 1 of the scheme is open to owners of traditional houses in villages, towns, and cities where the building is a Protected Structure and/or an historic structure within an Architectural Conservation Area.

Buildings previously used for commercial purposes also qualify for the scheme where the intended use is as a single dwelling or a single/multiple dwelling above the shop.

Stream 2

Stream 2 of the scheme is open to owners of Traditional Farmhouses where the building is a Protected Structure and/or an historic farmhouse located within an Architectural Conservation Area and/or a vernacular farmhouse which has no statutory protection.

The Conservation Advice Grant Scheme provides grants to cover 67% of the costs (up to a maximum grant of €5,000) of having a conservation expert with proven and appropriate expertise:

For more information on the Scheme click [HERE](#)

The closing date for receipt of completed applications is
Friday, 8th May at 5pm.

Any queries should be directed to conservationadvicegrants@housing.gov.ie

Walking Buddies Limerick- Community Walking Initiative Bringing People Together Across Limerick



Walking Buddies Limerick is a local volunteer-led walking group that has been bringing people together across Limerick for the past number of years through free weekly walks and social connection.

Walking Buddies welcomes men and women of all ages and fitness levels from across the city and surrounding areas.

Every Thursday at 7.30 pm, they meet outside Collins Bar, Dooradoyle, for a relaxed 5–6km walk, creating a welcoming social space for both regular members and newcomers.

The group has become an important support network for many participants, promoting both physical well-being and social connection in the community. In addition to the weekly walks, they also organise longer weekend hikes throughout the year.

These walks are free of charge and designed to encourage people of all abilities to get active, meet others and enjoy the benefits of walking in a supportive group environment. Local fitness and wellbeing partners are also contributing short demonstrations and guidance during the walks.

Click below to learn more and to register for events:

<https://walkingbuddieslimerick.wordpress.com/>

Call for Expressions of Interest – Community Space, Limerick Opportunity

MS Ireland is inviting expressions of interest from community, voluntary, and charitable organisations in Limerick City that are **seeking space for their services.**

About the Building

Located at Springfield, Singland Road (V94 P237), this 10,500 sq. ft. two-storey property (purchased June 2024 with support from the JP McManus Pro-Am Fund) is currently under development. The ground floor will house MS Ireland services, with completion expected by September 2026.

Available Space

Second floor: approx. 3,790 sq. ft.

Shell and core (fit-out flexible to tenant needs)

Accessible (stairs; lift can be installed)

Who It's For

Organisations aligned with MS Ireland's mission, particularly in health, disability, and community support.

Next Steps

Early engagement is encouraged to shape the space. Get in touch to express interest or discuss options. **Please contact**

Mary McCusker, 086 144 8767 or email: marym@ms-society.ie.



Women's
Collective
Ireland
Limerick

Community workers' insights survey

This survey seeks to gather the perspectives of community workers on women's participation, equality, and community infrastructure in the Limerick region and surrounding areas.

We are particularly interested in your insights on women's participation in local decision-making, the availability and accessibility of women-centred community spaces, barriers to equality and inclusion, and how broader societal dynamics are experienced at community level.



Thank you for sharing
your views

www.womenscollective.ie/wci-limerick

Limerick City and County Council Secures Designation of The People's Park as a "Quiet Area"



Limerick City and County Council Secures Designation of The People's Park as a "Quiet Area"

First "Quiet Area" outside of Dublin

Limerick City and County Council (LCCC) has successfully secured the designation of the People's Park as a "Quiet Area," following consultation with the Environmental Protection Agency (EPA) and approval by the Minister for the Department of Climate, Energy and the Environment, Darragh O'Brien TD, under the Environmental Noise Regulations 2018.

The designation formally recognises the park's tranquil sound environment. While it does not impose noise limits or restrict activities, the designation acknowledges that the quality of sound within the People's Park is significantly more pleasant than in the surrounding busier urban areas. The park's soundscape is largely characterised by natural sounds, contributing to its peaceful and restorative atmosphere.

Migrant Integration Strategy Survey

Limerick City are developing a strategy for Limerick City Council are developing their Migrant Integration Strategy and we are working with local community groups to hear from them on how Limerick can be more inclusive to migrants

- 1) Stakeholder survey - those working with migrants [HERE](#)
- 2) Community survey - migrant community themselves [HERE](#)

“Hop To It” and Help Track Local Frogs



Although well known, the common frog (*Rana temporaria*) is Ireland’s only native frog species and is listed as vulnerable across Europe. Frogs are considered important biological indicators because their skin is highly sensitive to pollution. Their presence or absence can reveal much about water quality and local environmental conditions. They are protected under both the EU Habitats Directive and the Irish Wildlife Act. Why not participate in the “Hop It” nationwide survey and report your sightings of frog spawn, tadpoles, froglets or adult frogs. These simple records play a crucial role in monitoring frog populations and understanding the health of the environments they depend on.

How to Take Part

If you spot frog spawn, tadpoles, froglets or adult frogs in your garden, local green space or while out walking, you can submit records directly to the IPCC at:

- www.ipcc.ie
- Email bogs@ipcc.ie
- Phone 045 860133

Records can also be submitted to the National Biodiversity Data Centre at <https://records.biodiversityireland.ie/start-recording>.

Further Details on [Limerick City and County Council Encourages Public to “Hop To It” and Help Track Local Frogs | Limerick.ie](#)

Trees.limerick.ie website to record newly planted trees across Limerick

Limerick City and County Council has created [Trees.limerick.ie](https://trees.limerick.ie) website to record newly planted trees across Limerick City and County.

Any individual, community group or business can now register any new tree planted.

This will enable to track the progress and count of trees planted in Limerick City and County.

[Trees.limerick.ie](https://trees.limerick.ie) is supported by the Mayor of Limerick, John Moran who is seeking to reach a target of at least one tree to be planted by every citizen in Limerick.

The link is <https://trees.limerick.ie/> and below is the QR code:





Grow

Mental Health

WHO WE ARE:

We are a community of people drawn together by our first-hand experiences of mental health problems. Having found practical ways of helping each other recover from mental health challenges we developed what we refer to as The Grow Program. We meet weekly in locations all over Ireland and use our proven [12 Step Program](#) to recover from various forms of mental health problems.



For Adults 18+
33 Henry Street, Limerick

Come along and hear Who Grow is, What we do and how you can receive support for your Mental Health.

Contact Celia 086 1526966 or celiabrett@grow.ie for further information.

Limerick Walking Guide



With the weather (occasionally) improving you can find routes and maps of the many fantastic walking/ running trails in Limerick City and County [HERE](#)

Circular Cups for Community Events in the Southern Region



Elevate your small scale event and festival by choosing to rent reusable cups. You will make a big difference to the environment by preventing waste and reducing litter.

Organisers of small scale events and festivals can now avail of beautifully designed robust, pint, half pint and hot beverage cups with or without lids at a reasonable cost.

More Information can be found [HERE](#)

Want to rent cups?

Here's a checklist:

1. Is your event or festival small-scale & not for profit?
2. Is your event/festival happening in Carlow, Clare, Cork City, Cork County, Kerry, Kilkenny, Limerick, Tipperary, Waterford and Wexford?

If yes is the answer to both these questions,
click on this button to order cups:

[**Order Cups**](#)

Balancing Stress - A HSE Resource for sharing with PPNs

The HSE has developed a Free, easy-to-access online programme called 'Balancing Stress' to support people across Ireland in managing common mental health difficulties including stress, anxiety and low mood.

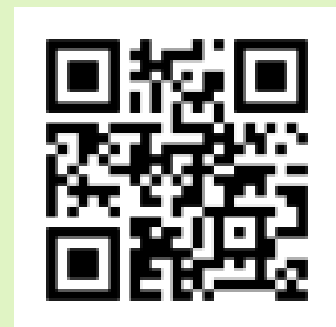
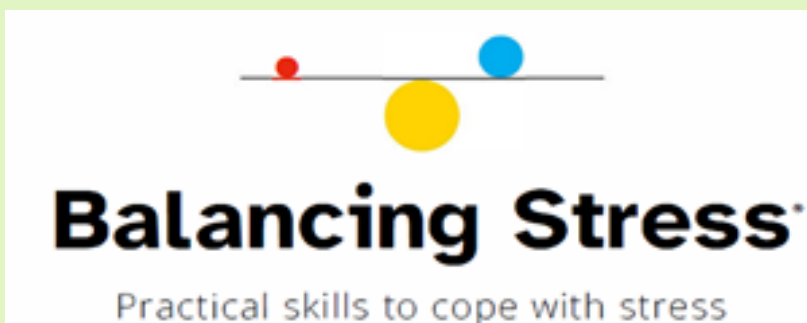
The HSE has developed a Free, easy-to-access online programme called 'Balancing Stress' to support people across Ireland in managing everyday mental difficulties such as stress, anxiety, low mood and worry.

The Balancing Stress programme offers six online video sessions (each around 35 minutes) covering key topics including managing stress, worry, anxiety, low mood, and relationship stress. This online programme offers people evidence-based tools to manage stress effectively and enhance their mental wellbeing.

The programme is delivered by Dr Niamh Clarke, HSE Principal Psychologist, and features expert interviews with Professor Alan Carr, UCD School of Clinical Psychology.

You can watch the videos at your own pace, on your own time, using a phone, tablet or laptop.

The easy to use QR code will take you directly to the programme. If you require further information, please do not hesitate to contact me at: yvonne.gilsenan@hse.ie



PPN Stakeholder Training

PPN Stakeholder Training

The online only self-paced training videos programme for PPN stakeholders has been developed with SJI.

Registrations for the online only training is now open.

Social Justice Ireland is providing this training on behalf of the Department.

The online only training covers the following:

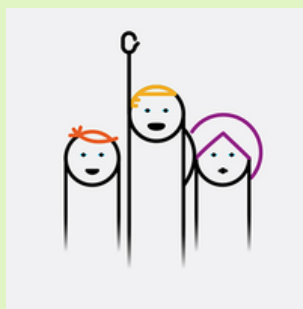
- An Introduction to the PPNs (2 Modules)
- Local Government Budgets
- PPNs and Local Government
- Effective Participation in Consultations
- Effective Facilitation
- Strategic Planning
- Measuring Outcomes and Impacts

This is online only and is intended for self-directed learning at the learner's own pace. Social Justice Ireland will provide some support via the webform on each Module page. There are no scheduled classes as part of this training.

To register, please complete the Registration Form at the following link: : [Register for Training_|_Social Justice Ireland](#)

PPN Limerick Documents

- The [PPN Website](#) has all our information and details regarding membership and groups, linkage groups and documentation.
- The [PPN Constitution](#) details how we operate:
- Our [Strategic Plan](#) outlines our goals for the next 5 years:
- Our [2026 Workplan](#) was agreed by the Plenary at our AGM on the 26th of November 2025.
- The [PPN Handbook](#) is the national document which guides the processes that all PPN's Nationally must follow.
- Training slides from recent Induction training for SPC Members can be viewed [HERE](#). They include background information that may be of interest.



MAYORAL PROGRAMME

Mayor of Limerick, John Moran, has unveiled an ambitious vision for the future of Limerick City and County with the publication of the Limerick Mayoral Programme 2024-2029, titled More for Limerick. This comprehensive 138-page document outlines the Mayor's vision and objectives for his term in office, as mandated by the Local Government (Mayor of Limerick) and Miscellaneous Provisions Act 2024.

[Mayoral Programme, More for Limerick, 2024-2029](#)

