



# Public Participation Network Limerick



## About PPN Limerick

PPN Limerick is a network of community, voluntary, social inclusion and environmental groups/organisations, working together for a better Limerick through public participation in local democratic structures. Visit [our website](#) for more information

## PPN Membership

Now stands at 308 members.

PPN Limerick membership continues to grow and you can check out all our members [on the Membership directory](#) on the PPN Limerick website.

Register to join [HERE](#)



## In this Newsletter

- Targeted call for EOI's for LEADER funded Biodiversity and Water Projects
- Upcoming Invasive Species Workshop in Adare
- LCDC resource page
- Full Circle Awards open for Nominations
- Training and Consultation opportunities

## Targeted call for Biodiversity and Water Resources Projects

A Targeted Call for Applications to the LEADER programme for projects related to Biodiversity and Sustainable development of Water Resources is now open .

The Call is open to applicants (Communities and Enterprise) from across County Limerick (excluding Limerick Metropolitan area).

This is a time limited targeted call for applications and those interested in applying for funding must submit an expression of interest before Monday August 17th 2026.

Supports will be available from West Limerick Resources throughout the application process with an information session scheduled to take place online on Tuesday June 30th at 7pm. Register for this session [HERE](#):

For More Information and contact details of the development officer Click [HERE](#)

# Biodiversity Education Workshop



# STOP THE SPREAD

## INVASIVE SPECIES WEEK 2026 LAUNCH WORKSHOP

 **Adare Heritage Centre,  
Limerick**

 **Monday, June 22**

 **10 AM - 1 PM**

**FREE TO ATTEND & OPEN  
TO ALL!**



[www.streamscapes.ie/education/stopthespread](http://www.streamscapes.ie/education/stopthespread)

[info@maiguerivertrust.ie](mailto:info@maiguerivertrust.ie) | Christine 086 0669606



# information clinics for the Water Supply Project Eastern and Midlands Region



## WATER SUPPLY PROJECT EASTERN AND MIDLANDS REGION CO. LIMERICK INFORMATION CLINICS



[water.ie/watersupplyproject](http://water.ie/watersupplyproject)



[watersupply@water.ie](mailto:watersupply@water.ie)



0818 667 700

Scan the QR Code for more information and upcoming information clinic details.



## Researching Research



Research in Ireland Barometer 2026 is a national initiative led by Research Ireland - Taighde Éireann to understand how people across Ireland experience and relate to research in their everyday lives.

They are particularly interested in hearing directly from communities to ensure that research policy and funding better reflect people's lived experiences, priorities, and needs. This survey is for anyone aged 16 and resident in Ireland and will be open for three months.

Complete the Survey by clicking [HERE](#)

## Full Circle Awards 2026

Do you know a circular champion? Someone who repairs, reuses or refurbishes items instead throwing them away?

Across six categories, they are inviting people around the country to nominate their local circular champions.

These are ordinary individuals are making an extraordinary impact through their actions, ideas, and commitment to a more circular future.

The winners will receive:

- €2,000 prize to support their circular work
- Unique handcrafted trophy made from upcycled materials
- Media exposure through Circular.ie and associated press

Award categories include:

- Repair and Reuse Champion
- Community Circular Champion
- Creative Circular Design
- Circular Living Advocate
- Best Community Campaign
- Circular Sports Champion

They are looking for people who are genuinely making a difference through their circular practices and inspiring others to follow suit.

Nominate your Circular Champion [HERE](#)

## Local Community Development Committees (LCDCs) New Informational website is now live

The Department has launched an awareness campaign regarding how Local Community Development Committees (LCDCs) connect public bodies and communities across Ireland. The programme commenced on Friday, May 1st and will run for a three-week period across radio, podcasts, print and online media.

The overall objective of the campaign is to raise public awareness on the role and function of the LCDCs and how they contribute to the development of local communities, through actions contained in each of their Local Economic and Community Plans (LECPs).

The new dedicated web page which can be viewed [HERE](#) is a central hub for information on each of the 33 Local Community Development Committees (LCDCs) and contains information and a series of videos on the following:

- Background of LCDCs
- Watch LCDCs in Action
- Local Economic and Community Plan (LECP)
- Additional Staff Resource (ASR)
- Find your LCDC
- Training for Staff

This resource will also benefit community and voluntary organisations, PPNs, together with local and community development organisations. It is hoped that these groups will utilise these assets to build a stronger on-line presence and gain better traction for their community activities, i.e.. fundraisers, local events, and media posts.



# ONE DAY ONLY **to drop** your **HOUSEHOLD** **HAZARDOUS** **WASTE ...for FREE!**

**BOOKING  
ESSENTIAL  
see below**

**SATURDAY 13<sup>TH</sup> JUNE 2026**  
**9AM - 1PM\***

**LIMERICK RACECOURSE, PATRICKSWELL V94 K858**  
Only those registered via the booking website will gain entry

*\*Opening hours subject to capacity limits*

**Householders, this is a great chance to safely dispose of that household hazardous waste that's been building up... and all for FREE!**

**Please note:**

- **No commercial or farm waste**
- Strictly limited to householders
- Only products in original containers with original labels

will be accepted

- There is limited capacity for some waste types
- Materials may **not** be left at the venue outside of the opening hours

☎ 061-556000

✉ customerservices@limerick.ie



Scan to book  
**FREE  
ENTRY**  
to the event  
or visit  
[www.mywaste.ie](http://www.mywaste.ie)



## We will only accept...

ADHESIVES

AEROSOLS

ANTIFREEZE

BLEACHES

CLEANING AGENTS

DETERGENTS

DRAIN CLEANERS

EMPTY OIL CONTAINERS

ENGINE COOLANTS

GARDEN FERTILIZERS

GARDEN HERBICIDES &  
PESTICIDES

GLUES

HOUSEHOLD PESTICIDES

INKS

MIXED FUELS

**MOTOR OIL** 25 litre limit per customer

**OIL FILTERS**

**PAINT**- limit 10 cans per customer

**PAINT THINNERS**

**PAINT STRIPPERS**

**RESINS**

**VARNISHES**



If an item's label contains any of these symbols, then it is classed as hazardous waste.



Comhairle Cathrach  
& Contae **Luimnigh**

Limerick City  
& County Council

**REGIONAL  
WASTE  
MANAGEMENT  
PLANNING OFFICES**



Rialtas na hÉireann  
Government of Ireland

## 2027 RYDER CUP



Please note that the international ballot is open for general admission tickets for the 2027 Ryder Cup in Adare Manor.

<https://www.rydercup.com/attend/ticket-information>

## Walking Buddies Limerick- Community Walking Initiative Bringing People Together Across Limerick



Walking Buddies Limerick is a local volunteer-led walking group that has been bringing people together across Limerick for the past number of years through free weekly walks and social connection.

Walking Buddies welcomes men and women of all ages and fitness levels from across the city and surrounding areas.

Every Thursday at 7.30 pm, they meet outside Collins Bar, Dooradoyle, for a relaxed 5–6km walk, creating a welcoming social space for both regular members and newcomers.

The group has become an important support network for many participants, promoting both physical well-being and social connection in the community. In addition to the weekly walks, they also organise longer weekend hikes throughout the year.

These walks are free of charge and designed to encourage people of all abilities to get active, meet others and enjoy the benefits of walking in a supportive group environment. Local fitness and wellbeing partners are also contributing short demonstrations and guidance during the walks.

Click below to learn more and to register for events:

<https://walkingbuddieslimerick.wordpress.com/>

## Limerick City and County Council Secures Designation of The People's Park as a "Quiet Area"



Limerick City and County Council Secures Designation of The People's Park as a "Quiet Area"

First "Quiet Area" outside of Dublin

Limerick City and County Council (LCCC) has successfully secured the designation of the People's Park as a "Quiet Area," following consultation with the Environmental Protection Agency (EPA) and approval by the Minister for the Department of Climate, Energy and the Environment, Darragh O'Brien TD, under the Environmental Noise Regulations 2018.

The designation formally recognises the park's tranquil sound environment. While it does not impose noise limits or restrict activities, the designation acknowledges that the quality of sound within the People's Park is significantly more pleasant than in the surrounding busier urban areas. The park's soundscape is largely characterised by natural sounds, contributing to its peaceful and restorative atmosphere.

## “Hop To It” and Help Track Local Frogs



Although well known, the common frog (*Rana temporaria*) is Ireland’s only native frog species and is listed as vulnerable across Europe. Frogs are considered important biological indicators because their skin is highly sensitive to pollution. Their presence or absence can reveal much about water quality and local environmental conditions. They are protected under both the EU Habitats Directive and the Irish Wildlife Act. Why not participate in the “Hop It” nationwide survey and report your sightings of frog spawn, tadpoles, froglets or adult frogs. These simple records play a crucial role in monitoring frog populations and understanding the health of the environments they depend on.

### How to Take Part

If you spot frog spawn, tadpoles, froglets or adult frogs in your garden, local green space or while out walking, you can submit records directly to the IPCC at:

- [www.ipcc.ie](http://www.ipcc.ie)
- Email [bogs@ipcc.ie](mailto:bogs@ipcc.ie)
- Phone 045 860133

Records can also be submitted to the National Biodiversity Data Centre at

<https://records.biodiversityireland.ie/start-recording>.

Further Details on [Limerick City and County Council Encourages Public to “Hop To It” and Help Track Local Frogs | Limerick.ie](https://www.limerickcityandcountycouncil.ie/encourages-public-to-hop-to-it-and-help-track-local-frogs)

## Trees.limerick.ie website to record newly planted trees across Limerick

Limerick City and County Council has created [Trees.limerick.ie](https://trees.limerick.ie) website to record newly planted trees across Limerick City and County.

Any individual, community group or business can now register any new tree planted.

This will enable to track the progress and count of trees planted in Limerick City and County.

[Trees.limerick.ie](https://trees.limerick.ie) is supported by the Mayor of Limerick, John Moran who is seeking to reach a target of at least one tree to be planted by every citizen in Limerick.

The link is <https://trees.limerick.ie/> and below is the QR code:





# Grow

## Mental Health

### WHO WE ARE:

We are a community of people drawn together by our first-hand experiences of mental health problems. Having found practical ways of helping each other recover from mental health challenges we developed what we refer to as The Grow Program. We meet weekly in locations all over Ireland and use our proven [12 Step Program](#) to recover from various forms of mental health problems.



***For Adults 18+***  
***33 Henry Street, Limerick***

**Come along and hear Who Grow is, What we do and how you can receive support for your Mental Health.**

**Contact Celia 086 1526966 or [celiabrett@grow.ie](mailto:celiabrett@grow.ie) for further information.**

## Limerick Walking Guide



With the weather (occasionally) improving you can find routes and maps of the many fantastic walking/ running trails in Limerick City and County [HERE](#)

## Active Travel Newsletter



Elevate your small scale event and festival by choosing to rent reusable cups. You will make a big difference to the environment by preventing waste and reducing litter.

Organisers of small scale events and festivals can now avail of beautifully designed robust, pint, half pint and hot beverage cups with or without lids at a reasonable cost.

More Information can be found [HERE](#)

### **Want to rent cups?**

Here's a checklist:

1. Is your event or festival small-scale & not for profit?
2. Is your event/festival happening in Carlow, Clare, Cork City, Cork County, Kerry, Kilkenny, Limerick, Tipperary, Waterford and Wexford?

If yes is the answer to both these questions, click on this button to order cups:

[Order Cups](#)

## Balancing Stress - A HSE Resource for sharing with PPNs

The HSE has developed a Free, easy-to-access online programme called 'Balancing Stress' to support people across Ireland in managing common mental health difficulties including stress, anxiety and low mood.

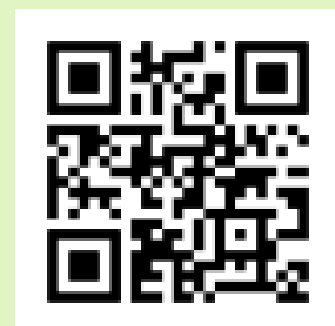
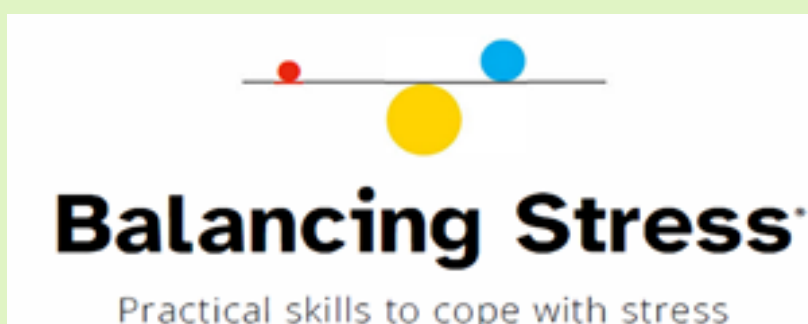
The HSE has developed a Free, easy-to-access online programme called 'Balancing Stress' to support people across Ireland in managing everyday mental difficulties such as stress, anxiety, low mood and worry.

The Balancing Stress programme offers six online video sessions (each around 35 minutes) covering key topics including managing stress, worry, anxiety, low mood, and relationship stress. This online programme offers people evidence-based tools to manage stress effectively and enhance their mental wellbeing.

The programme is delivered by Dr Niamh Clarke, HSE Principal Psychologist, and features expert interviews with Professor Alan Carr, UCD School of Clinical Psychology.

You can watch the videos at your own pace, on your own time, using a phone, tablet or laptop.

The easy to use QR code will take you directly to the programme. If you require further information, please do not hesitate to contact me at: [yvonne.gilsenan@hse.ie](mailto:yvonne.gilsenan@hse.ie)



## PPN Stakeholder Training

### PPN Stakeholder Training

The online only self-paced training videos programme for PPN stakeholders has been developed with SJI.

Registrations for the online only training is now open.

Social Justice Ireland is providing this training on behalf of the Department.

The online only training covers the following:

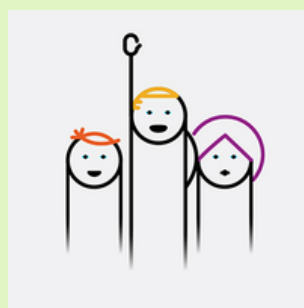
- An Introduction to the PPNs (2 Modules)
- Local Government Budgets
- PPNs and Local Government
- Effective Participation in Consultations
- Effective Facilitation
- Strategic Planning
- Measuring Outcomes and Impacts

This is online only and is intended for self-directed learning at the learner's own pace. Social Justice Ireland will provide some support via the webform on each Module page. There are no scheduled classes as part of this training.

To register, please complete the Registration Form at the following link: : [Register for Training\\_|\\_Social Justice Ireland](#)

## PPN Limerick Documents

- The [PPN Website](#) has all our information and details regarding membership and groups, linkage groups and documentation.
- The [PPN Constitution](#) details how we operate:
- Our [Strategic Plan](#) outlines our goals for the next 5 years:
- Our [2026 Workplan](#) was agreed by the Plenary at our AGM on the 26<sup>th</sup> of November 2025.
- The [PPN Handbook](#) is the national document which guides the processes that all PPN's Nationally must follow.
- Training slides from recent Induction training for SPC Members can be viewed [HERE](#). They include background information that may be of interest.



## MAYORAL PROGRAMME

Mayor of Limerick, John Moran, has unveiled an ambitious vision for the future of Limerick City and County with the publication of the Limerick Mayoral Programme 2024-2029, titled More for Limerick. This comprehensive 138-page document outlines the Mayor's vision and objectives for his term in office, as mandated by the Local Government (Mayor of Limerick) and Miscellaneous Provisions Act 2024.

[Mayoral Programme, More for Limerick, 2024-2029](#)

